

PSAT/NMSQT®

**SUMMARY OF
ANSWERS & SKILLS**
PSAT/NMSQT SOAS REPORT 2009

**BOOTHBAY REGION HIGH SCHOOL (200145)
CLASS OF 2012**

This online SOAS report details the performance of 50 students from the 10th grade. This report provides a closer look at the level of your students' skills when they took the PSAT/NMSQT this past October. The comparative information can give you valuable insights into your students' performance and assist in identifying curriculum needs to address academic weaknesses that may have been identified through this assessment.

This report focuses on student skills as it analyzes answers across each grade of students, providing insights into how well students are understanding and applying the skills taught in your curriculum. When shared with teachers, especially as a companion to the Student Data File (comprehensive data, including the responses of each student to every question), this report can inform the instructional needs within the classroom.

What Is Included?

This report is divided into three sections representing the academic areas tested: Critical Reading (pages 2-6), Mathematics (pages 7-11), and Writing Skills (pages 12-16). Within each area, the information is presented from three different perspectives: an analysis of correct answers; an analysis of incorrect answers; and a comparative analysis of skills.

These analyses include comparisons between your students' performance and the nation, your state, and a comparable group. The comparable group is made up of a random sample of 200,000 PSAT/NMSQT test-takers that illustrates your school's expected performance on each question. There is no demographic information (e.g., school size, school type, location, etc.) taken into account during the selection of this sample. A series of statistical analyses are performed to create a group of students from this sample that performed similarly to your students. Differences between your students' performance and the comparable group (remember, the comparable group represents your students' expected performance) are then plotted in the graphs presented on pages 3, 8, and 13 of this report. The plot for each question in the graph shows whether your students demonstrated higher performance than the comparable group (above 5%, or in the non-shaded area), similar performance to the comparable group (within 5%, or in the light-gray area), or lower performance (below 5%, or in the dark gray area). This type of presentation makes it easy for you to identify the questions that your students performed the same as, above, or below what would have been expected of a group with your students' performance profile.

Additional Resources to Supplement the SOAS

SOAS Tutorial (PowerPoint or pdf formats)

Review the SOAS Tutorial prior to viewing your reports. It will serve as an introduction to the various tables and data you are about to see, as well as provide suggestions for using the reports and interpreting data. Available in the "Resources" sidebar on the SOAS website.

Test-Question Detail Report (excel or pdf formats)

Have this supplemental item available while you are reviewing your SOAS report. It contains a lot of detail about each question, including the skills it measures and the question's difficulty level. It also contains work space to jot down problem questions that may need additional review. Available in the "Resources" sidebar on the SOAS website.

PSAT/NMSQT Test Book

Have a PSAT/NMSQT test book on hand while you are reviewing your SOAS report so that you can cross-reference information from the SOAS report, such as test questions and answer choices. We also recommend that educators actually take the test themselves prior to reviewing the SOAS and note the questions they feel may be difficult for students.

Answer Explanations Online

Review the complete answer explanations located in the My Online Score Report section of the My College QuickStart demo account. These explanations help clarify the skills and knowledge base that are needed to respond to the questions successfully.



PSAT/NMSQT 2009 CRITICAL READING SECTIONS

We recommend that you review the critical reading sections of the test prior to reviewing this report. It will familiarize you with the questions and aid in identifying specific test questions that may warrant special attention.

Pages 3 - 6 present three different perspectives on student performance on the October 2009 PSAT/NMSQT critical reading sections. These perspectives help educators look beyond student scores to identify their students' skills and areas for improvement, to ultimately support curriculum planning. Below is a description of each section and suggestions for further review.

Analysis of Correct Answers

This section contains a review of your group's answers to each critical reading question. It shows the percent of your group that responded correctly on each question, as well as the percent of students who responded correctly in your state, in the nation, and in a comparable group.

Pay particular attention to: (1) questions that appear in the darker gray area on the second graph "Difference between local and comparable groups", as this depicts where your group performed below expectation; and (2) to questions on the first graph where they performed below the state/national percentages. The left most table shows the percent correct for each group as well as the difficulty level (1-easy to 9-difficult) for each question.

Analysis of Incorrect Answers

This section provides insight into the problems students might have had with each critical reading question. In the "Percent of Answers" column, the correct answer is highlighted in a box and calls out the percent answered correctly by your group, your state, and the nation. You can also look at the incorrect answers to see the percentage of students that answered incorrectly (in your group and compared to other students in your state and the nation). The graph on the right is a visual representation and allows you to easily identify questions that your students most commonly missed and what their incorrect responses were. After you identify the commonly missed questions, go back to the test book and review the question and the incorrect answers to identify common problems with concepts, content, or basic reasoning. You may also want to reference the Test Question Detail for more insight into each question.

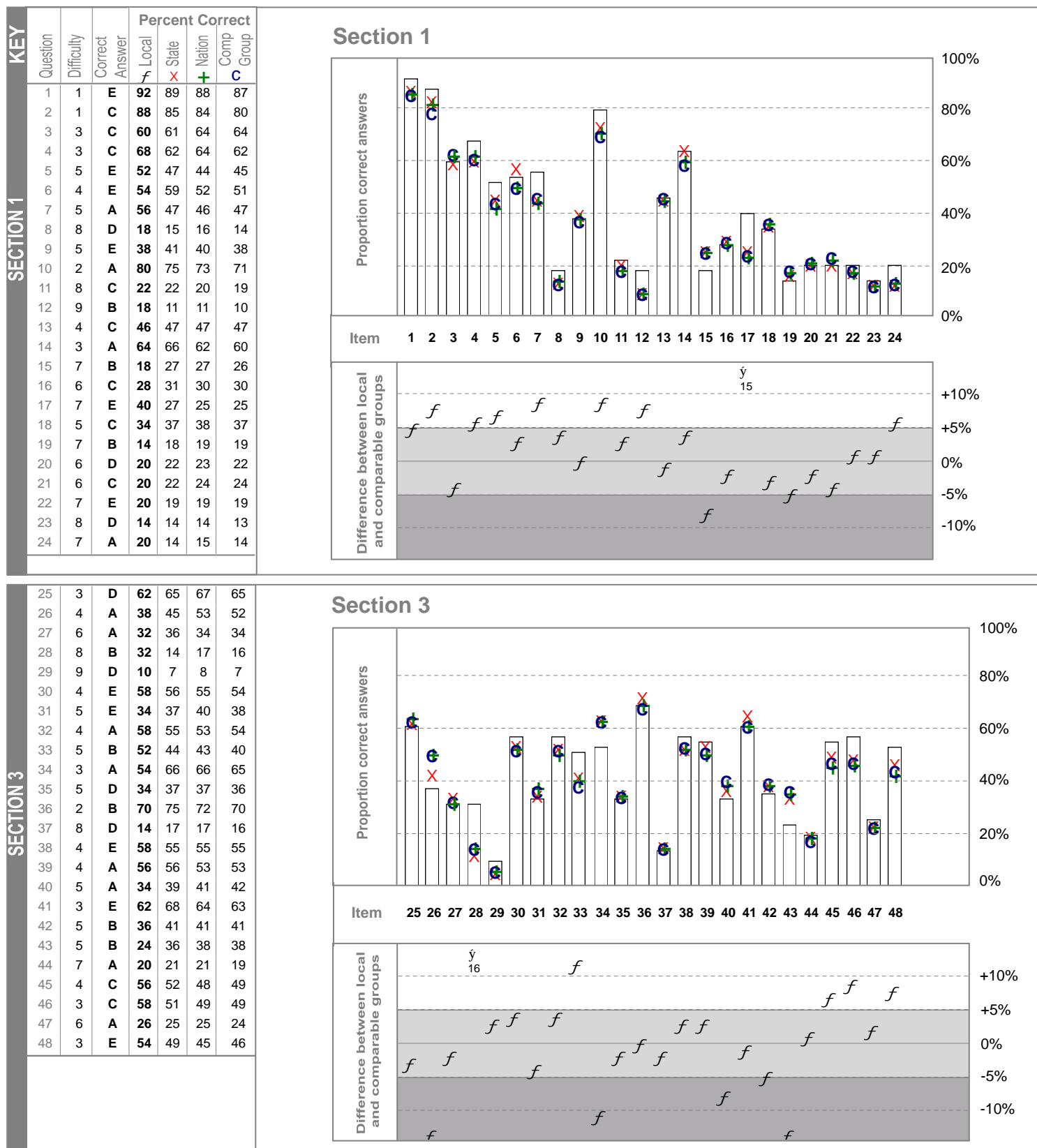
Note: Critical reading question types: Sentence completion (1-8, 25-29); Passage-based reading (9-24, 30-48).

Analysis of Skills

This section gives you information on the skills covered by the critical reading sections of the PSAT/NMSQT. The nation's performance is represented by the vertical line, and is the base, or average, performance on each skill. For each reported skill, you can see how your students performed compared to the nation and to the state. Any skills in which your students performed below (to the left of) the nation or state should probably be reviewed. Focus on those skills where your students' performance was the most noticeably below the state, and then those most noticeably below the nation. This skills report will confirm much of what you learned on the previous pages of question analyses. It may also provide additional insights into problem areas not previously addressed.

Note: The critical reading skills noted in this report are the skills that appear with high enough frequency for aggregate reporting

ANALYSIS OF CORRECT CRITICAL READING ANSWERS



Note that the term Local refers to your school.

See page 1 for a definition of comparable group.

ANALYSIS OF INCORRECT CRITICAL READING ANSWERS

KEY	Question	Difficulty	Group	Percent of Answers						Omitted	Distribution of Answers				Correct Answer	<input type="checkbox"/>
				A	B	C	D	E								
											20%	40%	60%	80%		
SECTION 1	1	1	Local	0	2	4	2	92	0	B C D			E			
			State	2	2	3	4	89	1	A B C D			E			
			Nation	3	2	3	5	88	1	A B C D			E			
	2	1	Local	2	2	88	4	4	0	A B D E			C			
			State	2	2	85	4	6	0	A B D E			C			
			Nation	2	3	84	5	6	0	A B D E			C			
	3	3	Local	10	12	60	2	2	14	A B D E				C		
			State	13	12	61	4	3	8	A B D E				C		
			Nation	14	10	64	4	4	5	A B D E				C		
	4	3	Local	10	14	68	4	4	0	A B D E				C		
			State	11	17	62	3	5	3	A B D E				C		
			Nation	9	18	64	2	5	3	A B D E				C		
	5	5	Local	24	14	4	6	52	0	A B C D				E		
			State	19	15	4	11	47	5	A B C D				E		
			Nation	19	16	4	11	44	5	A B C D				E		
	6	4	Local	2	0	40	2	54	2	A B C D				E		
			State	3	3	30	5	59	1	A B C D				E		
			Nation	4	3	36	5	52	2	A B C D				E		
	7	5	Local	56	4	6	14	8	12	B C D E				A		
			State	47	9	11	19	4	9	B C D E				A		
			Nation	46	12	10	18	6	8	B C D E				A		
	8	8	Local	12	22	16	18	10	22	A B C D E					D	
			State	15	18	21	15	8	23	A B C D E					D	
			Nation	16	18	23	16	8	19	A B C D E					D	
	9	5	Local	18	26	6	4	38	8	A B C D E					E	
			State	10	28	10	8	41	4	A B C D E					E	
			Nation	12	26	11	8	40	4	A B C D E					E	
	10	2	Local	80	4	6	6	0	4	B C D E				A		
			State	75	9	6	5	3	2	B C D E				A		
			Nation	73	11	6	6	2	2	B C D E				A		
	11	8	Local	34	28	22	4	4	8	A B C D E					C	
			State	38	19	22	9	5	7	A B C D E					C	
			Nation	40	20	20	9	4	7	A B C D E					C	
	12	9	Local	20	18	28	12	16	6	A B C D E					B	
			State	17	11	26	15	26	5	A B C D E					B	
			Nation	14	11	23	17	29	5	A B C D E					B	
	13	4	Local	28	10	46	8	6	2	A B C D E					C	
			State	11	18	47	13	5	6	A B C D E					C	
			Nation	11	17	47	14	5	7	A B C D E					C	
	14	3	Local	64	16	6	6	4	4	B C D E				A		
			State	66	9	8	8	5	5	B C D E				A		
			Nation	62	10	9	8	5	6	B C D E				A		
	15	7	Local	18	18	28	6	24	6	A B C D E					B	
			State	24	27	15	7	13	15	A B C D E					B	
			Nation	23	27	17	7	11	15	A B C D E					B	
	16	6	Local	8	16	28	18	20	10	A B C D E					C	
			State	15	11	31	17	15	12	A B C D E					C	
			Nation	15	11	30	17	13	14	A B C D E					C	
	17	7	Local	6	18	18	14	40	4	A B C D E					E	
			State	11	21	14	14	27	13	A B C D E					E	
			Nation	12	22	13	14	25	15	A B C D E					E	
	18	5	Local	24	20	34	4	2	16	A B C D E					C	
			State	15	13	37	6	9	21	A B C D E					C	
			Nation	15	12	38	6	8	21	A B C D E					C	
	19	7	Local	8	14	10	38	12	18	A B C D E					B	
			State	16	18	11	18	13	23	A B C D E					B	
			Nation	16	19	12	18	11	23	A B C D E					B	
	20	6	Local	18	16	6	20	20	20	A B C D E					D	
			State	10	11	10	22	21	26	A B C D E					D	
			Nation	10	13	11	23	19	26	A B C D E					D	
	21	6	Local	16	10	20	16	24	14	A B C D E					C	
			State	16	13	22	9	19	22	A B C D E					C	
			Nation	16	15	24	8	16	22	A B C D E					C	
	22	7	Local	24	14	16	8	20	18	A B C D E					E	
			State	18	12	10	11	19	29	A B C D E					E	
			Nation	18	12	11	11	19	28	A B C D E					E	
	23	8	Local	16	38	16	14	0	16	A B C D E					D	
			State	8	32	13	14	5	29	A B C D E					D	
			Nation	8	31	14	14	5	28	A B C D E					D	
	24	7	Local	20	8	24	18	10	20	B C D E					A	
			State	14	7	25	15	7	32	B C D E					A	
			Nation	15	8	27	14	7	30	B C D E					A	

Note that the total percentage of all answer choices may not always add up to exactly 100% due to rounding procedures.

Note that the term Local refers to your school.

ANALYSIS OF INCORRECT CRITICAL READING ANSWERS

KEY	Question	Difficulty	Group	Percent of Answers							Omitted	Distribution of Answers				Correct Answer
				A	B	C	D	E								
										20%		40%	60%	80%		
SECTION 3	25	3	Local	6	18	8	62	6	0		A	B	C	E	D	
			State	5	10	7	65	13	1		A	B	C	E	D	
			Nation	4	11	6	67	11	1		A	B	C	E	D	
	26	4	Local	38	22	16	16	8	0		B	C	D	E	A	
			State	45	20	13	16	5	3		B	C	D	E	A	
			Nation	53	15	11	15	4	2		B	C	D	E	A	
	27	6	Local	32	6	20	16	14	12		B	C	D	E	A	
			State	36	11	19	9	12	14		B	C	D	E	A	
			Nation	34	10	19	9	14	13		B	C	D	E	A	
	28	8	Local	16	32	20	6	16	10		A	C	D	E	B	
			State	22	14	15	16	17	16		A	C	D	E	B	
			Nation	24	17	15	13	16	15		A	C	D	E	B	
	29	9	Local	6	20	28	10	34	2		A	B	C	E	D	
			State	14	19	27	7	22	12		A	B	C	E	D	
			Nation	14	15	28	8	23	13		A	B	C	E	D	
	30	4	Local	16	8	8	10	58	0		A	B	C	D	E	
			State	17	7	12	6	56	3		A	B	C	D	E	
			Nation	15	7	13	6	55	4		A	B	C	D	E	
	31	5	Local	6	28	14	16	34	2		A	B	C	D	E	
			State	11	19	13	15	37	5		A	B	C	D	E	
			Nation	11	20	12	14	40	5		A	B	C	D	E	
	32	4	Local	58	6	16	10	8	2		B	C	D	E	A	
			State	55	12	13	9	9	2		B	C	D	E	A	
			Nation	53	16	14	8	7	2		B	C	D	E	A	
	33	5	Local	16	52	14	14	4	0		A	C	D	E	B	
			State	14	44	11	20	6	4		A	C	D	E	B	
			Nation	16	43	11	21	6	4		A	C	D	E	B	
	34	3	Local	54	10	16	16	2	2		B	C	D	E	A	
			State	66	7	11	10	3	4		B	C	D	E	A	
			Nation	66	8	11	9	3	4		B	C	D	E	A	
	35	5	Local	20	16	10	34	16	4		A	B	C	E	D	
			State	22	8	16	37	15	3		A	B	C	E	D	
			Nation	21	9	15	37	14	4		A	B	C	E	D	
	36	2	Local	8	70	10	6	4	2		A	C	D	E	B	
			State	9	75	7	5	3	2		A	C	D	E	B	
			Nation	10	72	7	5	3	3		A	C	D	E	B	
	37	8	Local	6	24	30	14	26	0		A	B	C	E	D	
			State	14	19	14	17	31	6		A	B	C	E	D	
			Nation	16	18	13	17	29	6		A	B	C	E	D	
	38	4	Local	6	6	6	24	58	0		A	B	C	D	E	
			State	8	8	9	17	55	4		A	B	C	D	E	
			Nation	7	9	8	17	55	5		A	B	C	D	E	
	39	4	Local	56	18	12	8	6	0		B	C	D	E	A	
			State	56	15	9	8	8	4		B	C	D	E	A	
			Nation	53	16	9	9	8	5		B	C	D	E	A	
	40	5	Local	34	16	22	6	8	14		B	C	D	E	A	
			State	39	14	14	9	11	14		B	C	D	E	A	
			Nation	41	14	14	9	10	14		B	C	D	E	A	
	41	3	Local	8	16	4	8	62	2		A	B	C	D	E	
			State	10	7	5	6	68	5		A	B	C	D	E	
			Nation	10	8	5	6	64	6		A	B	C	D	E	
	42	5	Local	14	36	6	14	24	6		A	C	D	E	B	
			State	20	41	6	8	19	6		A	C	D	E	B	
			Nation	20	41	6	7	19	8		A	C	D	E	B	
	43	5	Local	10	24	28	8	16	14		A	C	D	E	B	
			State	10	36	19	9	16	11		A	C	D	E	B	
			Nation	9	38	16	10	12	15		A	C	D	E	B	
	44	7	Local	20	10	10	28	22	10		B	C	D	E	A	
			State	21	11	6	27	25	10		B	C	D	E	A	
			Nation	21	11	7	27	21	13		B	C	D	E	A	
	45	4	Local	8	14	56	6	8	8		A	B	D	E	C	
			State	11	10	52	11	5	12		A	B	D	E	C	
			Nation	10	11	48	11	5	15		A	B	D	E	C	
	46	3	Local	18	8	58	6	2	8		A	B	D	E	C	
			State	12	10	51	5	7	14		A	B	D	E	C	
			Nation	11	10	49	6	7	18		A	B	D	E	C	
	47	6	Local	26	28	12	6	16	12		B	C	D	E	A	
			State	25	20	15	9	15	18		B	C	D	E	A	
			Nation	25	19	14	9	11	22		B	C	D	E	A	
	48	3	Local	4	10	16	6	54	10		A	B	C	D	E	
			State	5	9	11	10	49	17		A	B	C	D	E	
			Nation	6	9	11	9	45	20		A	B	C	D	E	

Note that the total percentage of all answer choices may not always add up to exactly 100% due to rounding procedures.

Note that the term Local refers to your school.

KEY

KEY	Skills	Comparative Performance				
					<div><div></div><div>National average</div></div>	
					<div><div></div><div>Below national average</div></div>	<div><div></div><div>Exceeds national average</div></div>
CRITICAL READING	CR1 Understanding main ideas in a reading passage				<div><div></div><div>Xf</div></div>	
	CR3 Comparing and contrasting ideas presented in two passages				<div><div></div><div>fX</div></div>	
	CR4 Understanding the use of examples				<div><div></div><div>fX</div></div>	
	CR5 Recognizing the purpose of various writing strategies				<div><div></div><div>fX</div></div>	
	CR6 Applying ideas presented in a reading passage				<div><div></div><div>Xf</div></div>	
	CR7 Determining an author's purpose or perspective				<div><div></div><div>Xf</div></div>	
	CR9 Distinguishing conflicting viewpoints				<div><div></div><div>Xf</div></div>	
	CR10 Being thorough				<div><div></div><div>Xf</div></div>	
	CR11 Understanding difficult vocabulary				<div><div></div><div>Xf</div></div>	
	CR12 Understanding how negative words, suffixes, and prefixes affect sentences				<div><div></div><div>Xf</div></div>	
	CR16 Recognizing a definition when it is presented in a sentence				<div><div></div><div>Xf</div></div>	
	CR17 Understanding sentences that deal with abstract ideas				<div><div></div><div>Xf</div></div>	
	CR19 Comprehending long sentences				<div><div></div><div>Xf</div></div>	

PSAT/NMSQT 2009 MATHEMATICS SECTIONS

We recommend that you review the mathematics sections of the test prior to reviewing this report. It will familiarize you with the questions and aid in identifying specific test questions that may warrant special attention.

Pages 8 - 11 present three different perspectives on student performance on the October 2009 PSAT/NMSQT mathematics sections. These perspectives help educators look beyond student scores to identify their students' skills and areas for improvement, to ultimately support curriculum planning. Below is a description of each section and suggestions for further review.

Analysis of Correct Answers

This section contains a review of your group's answers to each mathematics question. It shows the percent of your group that responded correctly on each question, as well as the percent of students who responded correctly in your state, in the nation, and in a comparable group.

Pay particular attention to: (1) questions that appear in the darker gray area on the second graph "Difference between local and comparable groups", as this depicts where your group performed below expectation; and (2) to questions on the first graph where they performed below the state/national percentages. The left most table shows the percent correct for each group as well as the difficulty level (1-easy to 9-difficult) for each question.

Analysis of Incorrect Answers

Multiple-choice questions (1-28)

This section provides more insight into the problems students might have had with individual math questions. The columns of numbers on the left will give you specific percentages showing the popularity of each incorrect answer. The graph will allow you to easily locate those questions on which your group had the most difficulty, and what their chosen responses were.

Student-produced response questions (Grid-ins) (29-38)

This section provides more insight into the problems students might have had with the individual math questions where they had to create their own answers, rather than choose from multiple choices. The columns of numbers on the left provide specific percentages of correct answers, the most popular incorrect answer, all other answers combined, and the omits. The graph allows you to easily identify the questions that your group had the most difficulty with.

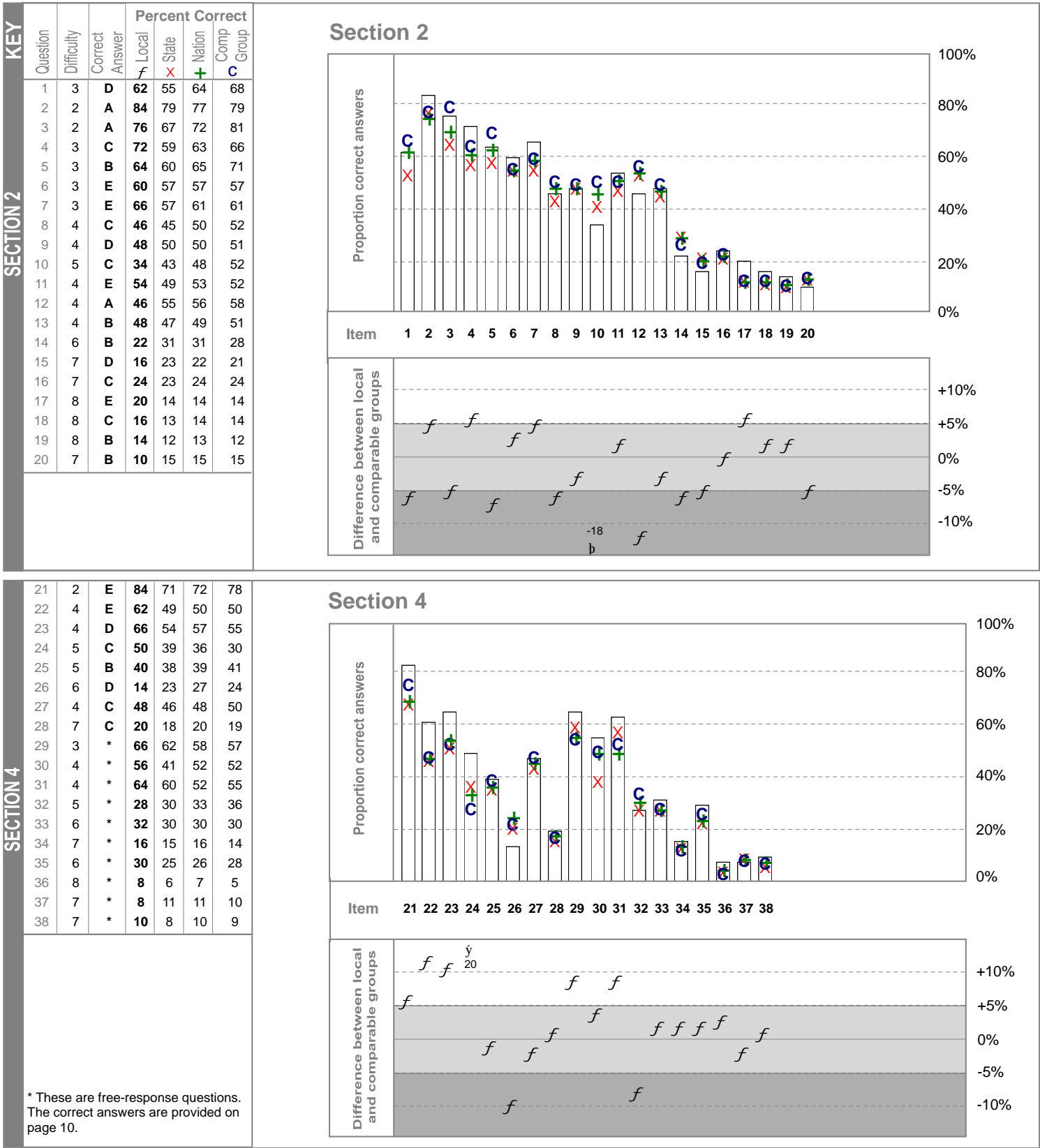
A suggestion: use the table to identify your students' most common incorrect response; also look at the most common incorrect response for the state and the nation; when the most common incorrect response for the state and nation is different than that of your group, go back to the test book and review the question and the incorrect answers to identify common problems with concepts, content, or basic reasoning. You may also want to reference the Test Question Detail for more insight into each question.

Analysis of Skills

This section gives you information on the skills covered by the math sections of the PSAT/NMSQT. The nation's performance is represented by the vertical line, and is the base, or average, performance on each skill. For each reported skill, you can see how your students performed compared to the nation and to the state. Any skills in which your students performed below (to the left of) the nation or state should probably be reviewed. Focus on those skills where your students' performance was the most noticeably below the state, and then those most noticeably below the nation. This skills report will confirm much of what you learned on the previous pages of question analyses. It may also provide additional insights into problem areas not previously addressed.

Note: The math skills noted in this report are the skills that appear with high enough frequency for aggregate reporting

ANALYSIS OF CORRECT MATHEMATICS ANSWERS



SECTION 4

21	2	E	84	71	72	78
22	4	E	62	49	50	50
23	4	D	66	54	57	55
24	5	C	50	39	36	30
25	5	B	40	38	39	41
26	6	D	14	23	27	24
27	4	C	48	46	48	50
28	7	C	20	18	20	19
29	3	*	66	62	58	57
30	4	*	56	41	52	52
31	4	*	64	60	52	55
32	5	*	28	30	33	36
33	6	*	32	30	30	30
34	7	*	16	15	16	14
35	6	*	30	25	26	28
36	8	*	8	6	7	5
37	7	*	8	11	11	10
38	7	*	10	8	10	9

* These are free-response questions.
The correct answers are provided on page 10.

Section 4

Proportion correct answers

Item	21	22	23	24	25	26	27	28	29	30	31	32	33	34	35	36	37	38
Proportion correct answers	84%	62%	66%	50%	40%	14%	48%	20%	66%	56%	64%	28%	32%	16%	30%	8%	8%	10%

Difference between local and comparable groups

Item	21	22	23	24	25	26	27	28	29	30	31	32	33	34	35	36	37	38
Difference between local and comparable groups	+12%	+10%	+10%	+10%	+10%	+10%	+10%	+10%	+10%	+10%	+10%	+10%	+10%	+10%	+10%	+10%	+10%	+10%

Note that the term Local refers to your school.
See page 1 for a definition of comparable group.

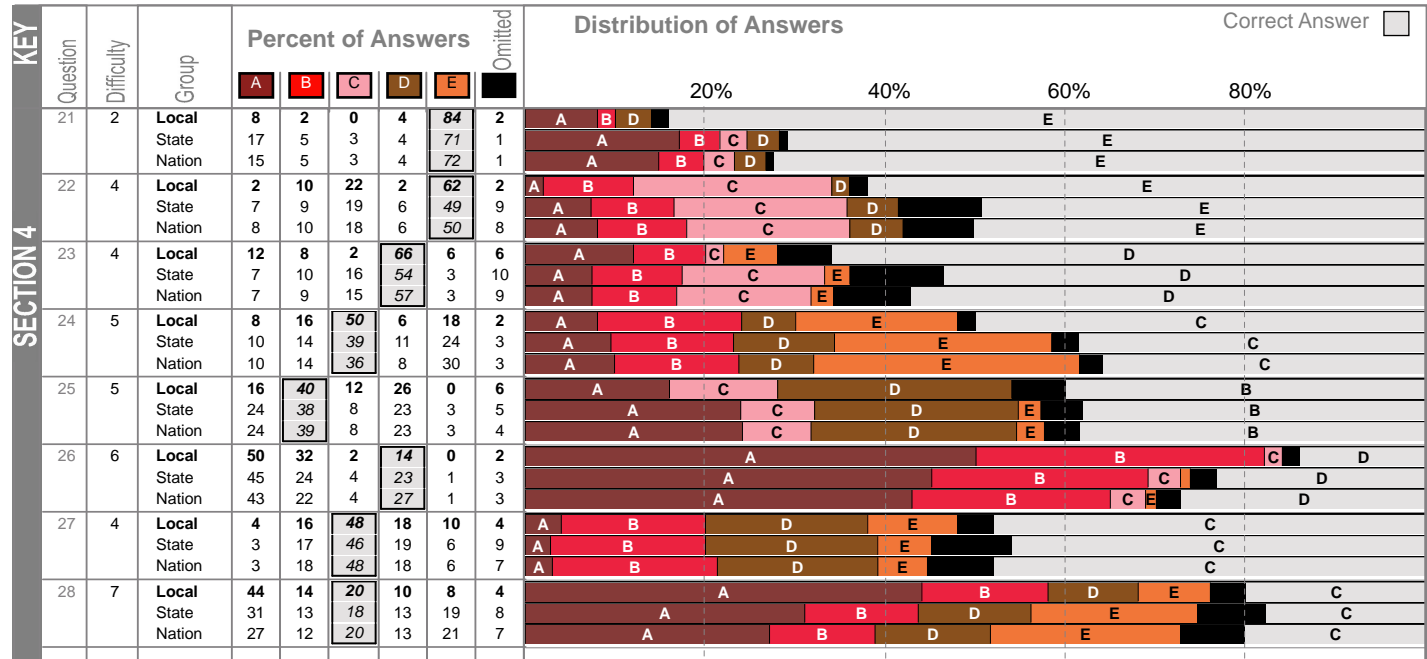
ANALYSIS OF INCORRECT MATHEMATICS ANSWERS

KEY	Question	Difficulty	Group	Percent of Answers						Omitted	Distribution of Answers				Correct Answer	
				A	B	C	D	E								
											20%	40%	60%	80%		
SECTION 2	1	3	Local	10	6	16	62	6	0		A	B	C	E	D	
			State	12	7	18	55	4	3		A	B	C	E	D	
			Nation	9	6	15	64	5	2		A	B	C	E	D	
	2	2	Local	84	10	2	2	0	2		B	C	D	E	A	
			State	79	4	5	6	3	4		B	C	D	E	A	
			Nation	77	4	6	7	2	3		B	C	D	E	A	
	3	2	Local	76	10	4	8	2	0		B	C	D	E	A	
			State	67	9	7	13	1	2		B	C	D	E	A	
			Nation	72	6	6	12	2	2		B	C	D	E	A	
	4	3	Local	2	6	72	16	2	2		A	B	C	D	E	
			State	3	6	59	25	4	3		A	B	C	D	E	
			Nation	3	5	63	24	3	2		A	B	C	D	E	
	5	3	Local	8	64	6	20	0	2		A	C	D	E	B	
			State	6	60	8	18	5	4		A	C	D	E	B	
			Nation	5	65	7	16	4	3		A	C	D	E	B	
	6	3	Local	6	10	18	6	60	0		A	B	C	D	E	
			State	7	9	11	8	57	8		A	B	C	D	E	
			Nation	7	10	12	8	57	7		A	B	C	D	E	
	7	3	Local	6	6	8	12	66	2		A	B	C	D	E	
			State	8	6	9	13	57	7		A	B	C	D	E	
			Nation	8	5	10	12	61	5		A	B	C	D	E	
	8	4	Local	8	18	46	10	8	10		A	B	C	D	E	
			State	11	15	45	7	12	10		A	B	C	D	E	
			Nation	12	13	50	6	11	7		A	B	C	D	E	
	9	4	Local	8	18	10	48	16	0		A	B	C	D	E	
			State	8	12	9	50	18	3		A	B	C	D	E	
			Nation	8	12	9	50	18	3		A	B	C	D	E	
	10	5	Local	4	20	34	26	2	14		A	B	C	D	E	
			State	3	11	43	14	7	21		A	B	C	D	E	
			Nation	3	12	48	13	6	17		A	B	C	D	E	
	11	4	Local	16	4	18	4	54	4		A	B	C	D	E	
			State	14	6	18	7	49	6		A	B	C	D	E	
			Nation	11	6	17	7	53	6		A	B	C	D	E	
	12	4	Local	46	10	2	0	38	4		B	C	D	E	A	
			State	55	5	5	3	27	5		B	C	D	E	A	
			Nation	56	5	6	4	25	5		B	C	D	E	A	
	13	4	Local	4	48	6	24	14	4		A	C	D	E	B	
			State	5	47	7	26	5	10		A	C	D	E	B	
			Nation	6	49	7	23	6	9		A	C	D	E	B	
	14	6	Local	6	22	38	10	8	16		A	C	D	E	B	
			State	6	31	30	6	8	20		A	C	D	E	B	
			Nation	6	31	35	5	8	16		A	C	D	E	B	
	15	7	Local	8	18	30	16	18	10		A	B	C	D	E	
			State	11	15	23	23	17	11		A	B	C	D	E	
			Nation	12	14	23	22	15	15		A	B	C	D	E	
	16	7	Local	6	24	24	20	8	18		A	B	C	D	E	
			State	12	20	23	12	6	28		A	B	C	D	E	
			Nation	12	23	24	11	6	25		A	B	C	D	E	
	17	8	Local	18	26	8	18	20	10		A	B	C	D	E	
			State	14	27	14	15	14	16		A	B	C	D	E	
			Nation	13	27	14	14	14	17		A	B	C	D	E	
	18	8	Local	6	58	16	2	4	14		A	B	C	D	E	
			State	6	47	13	11	4	18		A	B	C	D	E	
			Nation	6	46	14	11	4	19		A	B	C	D	E	
	19	8	Local	22	14	8	8	24	24		A	C	D	E	B	
			State	19	12	10	10	24	25		A	C	D	E	B	
			Nation	17	13	11	9	23	26		A	C	D	E	B	
	20	7	Local	28	10	12	18	10	22		A	C	D	E	B	
			State	20	15	17	9	11	28		A	C	D	E	B	
			Nation	19	15	18	9	10	28		A	C	D	E	B	

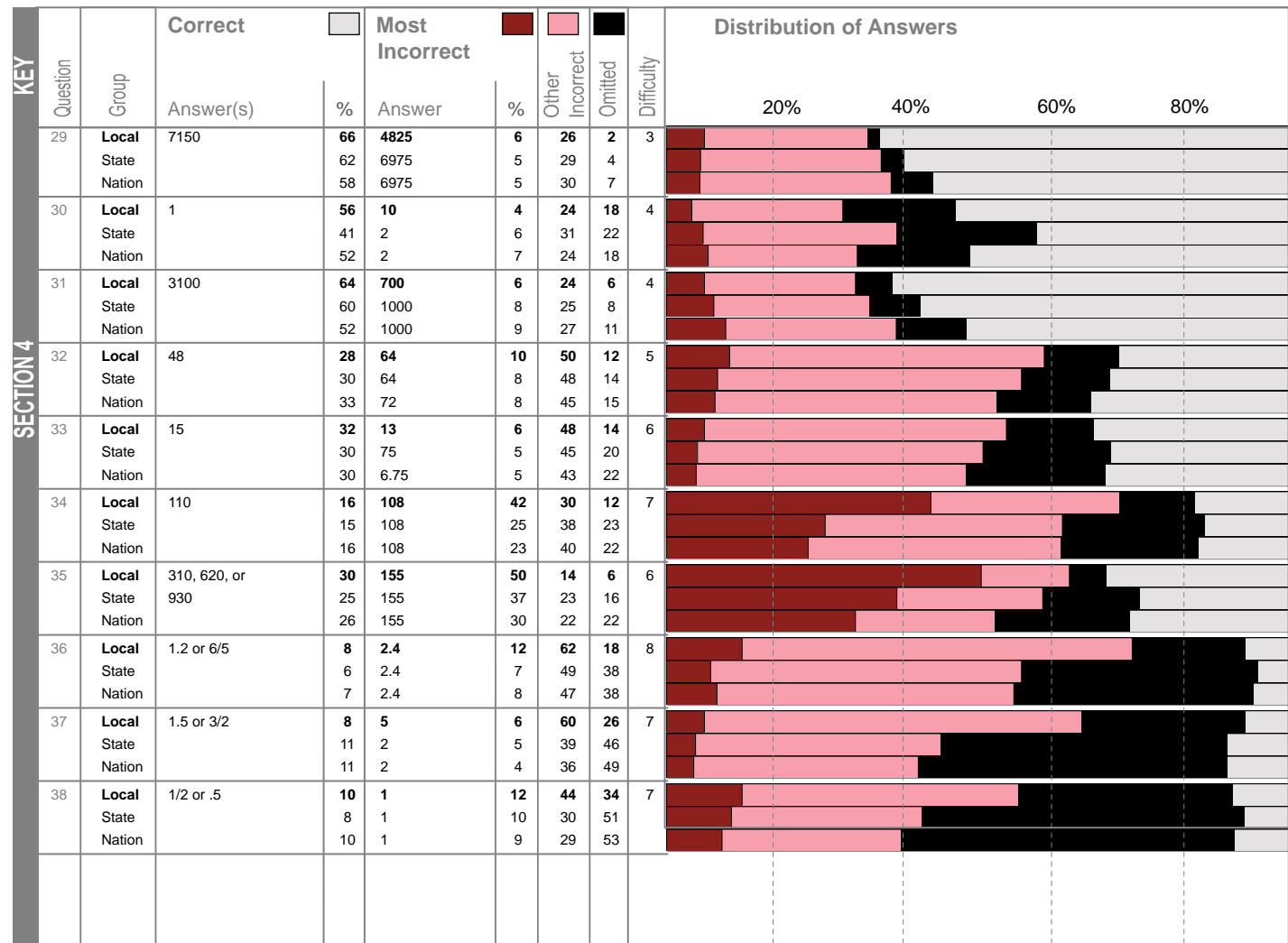
Note that the total percentage of all answer choices may not always add up to exactly 100% due to rounding procedures.

Note that the term Local refers to your school.

ANALYSIS OF INCORRECT MATHEMATICS ANSWERS



ANALYSIS OF INCORRECT ANSWERS ON THE STUDENT-PRODUCED RESPONSE



Note that the total percentage of all answer choices may not always add up to exactly 100% due to rounding procedures.

Note that the term Local refers to your school.

KEY

MATH

11/16

PSAT/NMSQT 2009 WRITING SKILLS SECTION

We recommend that you review the writing skills sections of the test prior to reviewing this report. It will familiarize you with the questions and aid in identifying specific test questions that may warrant special attention.

Pages 13 - 16 present three different perspectives on student performance on the October 2009 PSAT/NMSQT writing skills sections. These perspectives help educators look beyond student scores to identify their students' skills and areas for improvement, to ultimately support curriculum planning. Below is a description of each section and suggestions for further review.

Analysis of Correct Answers

This section contains a review of your group's answers to each writing skills question. It shows the percent of your group that responded correctly on each question, as well as the percent of students who responded correctly in your state, in the nation, and in a comparable group.

Pay particular attention to: (1) questions that appear in the darker gray area on the second graph "Difference between local and comparable groups", as this depicts where your group performed below expectation; and (2) to questions on the first graph where they performed below the state/national percentages. The left most table shows the percent correct for each group as well as the difficulty level (1-easy to 9-difficult) for each question.

Analysis of Incorrect Answers

This section provides insight into the problems students might have had with each writing skills question. In the "Percent of Answers" column, the correct answer is highlighted in a box and calls out the percent answered correctly by your group, your state, and the nation. You can also look at the incorrect answers to see the percentage of students that answered incorrectly (in your group and compared to other students in your state and the nation). The graph on the right is a visual representation and allows you to easily identify questions that your students most commonly missed and what their incorrect responses were. After you identify the commonly missed questions, go back to the test book and review the question and the incorrect answers to identify common problems with concepts, content, or basic reasoning. You may also want to reference the Test Question Detail for more insight into each question.

Note: writing skills question types; Improving sentences (1-20); Identifying sentence errors (21-34); Improving paragraphs (35-39).

Analysis of Skills

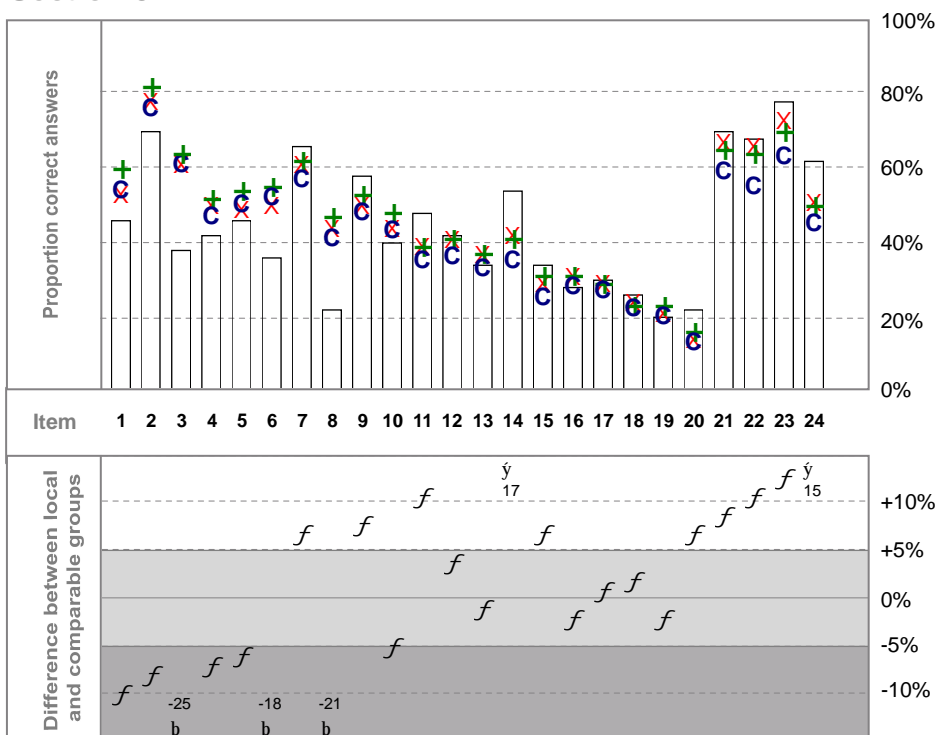
This section gives you information on the skills covered by the writing sections of the PSAT/NMSQT. The nation's performance is represented by the vertical line, and is the base, or average, performance on each skill. For each reported skill, you can see how your students performed compared to the nation and to the state. Any skills in which your students performed below (to the left of) the nation or state should probably be reviewed. Focus on those skills where your students' performance was the most noticeably below the state, and then those most noticeably below the nation. This skills report will confirm much of what you learned on the previous pages of question analyses. It may also provide additional insights into problem areas not previously addressed.

Note: The writing skills noted in this report are the skills that appear with high enough frequency for aggregate reporting

ANALYSIS OF CORRECT WRITING SKILLS ANSWERS

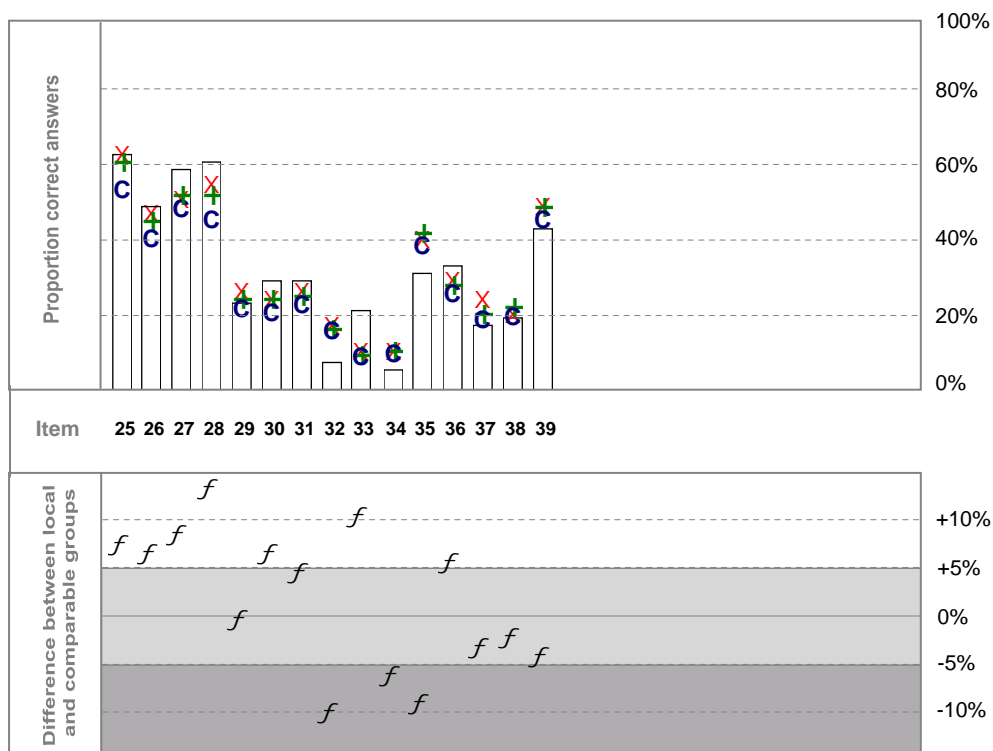
KEY	Question	Difficulty	Correct Answer	Percent Correct			
				Local	State	Nation	Comp Group
SECTION 5	1	2	D	46	55	62	56
	2	1	B	70	80	84	78
	3	2	C	38	63	66	63
	4	3	E	42	52	54	49
	5	3	D	46	51	56	52
	6	3	A	36	52	57	54
	7	2	C	66	63	64	59
	8	4	B	22	46	49	43
	9	3	D	58	52	55	50
	10	4	E	40	46	50	45
	11	4	D	48	41	41	37
	12	4	C	42	43	43	38
	13	5	C	34	39	39	35
	14	4	D	54	44	43	37
	15	5	E	34	31	33	27
	16	5	B	28	33	33	30
	17	6	C	30	31	31	29
	18	6	A	26	26	25	24
	19	6	C	20	23	25	22
	20	7	E	22	16	18	15
	21	2	A	70	69	67	61
	22	2	D	68	68	66	57
	23	1	E	78	75	72	65
	24	3	E	62	53	52	47

Section 5



SECTION 5	25	2	A	64	66	64	56
	26	3	D	50	50	48	43
	27	3	A	60	54	55	51
	28	3	E	62	58	55	48
	29	5	A	24	29	27	24
	30	6	A	30	27	27	23
	31	5	B	30	29	28	25
	32	7	B	8	20	19	18
	33	8	B	22	13	12	11
	34	8	E	6	13	13	12
	35	3	C	32	43	45	41
	36	5	D	34	32	31	28
	37	6	C	18	27	23	21
	38	5	B	20	23	25	22
	39	2	C	44	52	52	48

Section 5



Note that the term Local refers to your school.

See page 1 for a definition of comparable group.

ANALYSIS OF INCORRECT WRITING SKILLS ANSWERS

KEY	Question	Difficulty	Group	Percent of Answers						Omitted	Distribution of Answers				Correct Answer	
				A	B	C	D	E								
											20%	40%	60%	80%		
SECTION 5	1	2	Local State Nation	30 12 9	6 18 16	8 5 5	46 55 62	10 9 8	0 1 1		A	A	B	C	E	D
	2	1	Local State Nation	10 8 7	70 80 84	6 4 4	6 5 4	8 3 2	0 0 0		A	A	C	D	E	B
	3	2	Local State Nation	2 3 3	10 5 4	38 63 66	44 22 21	4 6 5	2 1 1		A	A	B	D	E	C
	4	3	Local State Nation	2 4 5	18 20 19	8 3 3	30 20 19	42 52 54	0 1 1		A	A	B	C	D	E
	5	3	Local State Nation	4 7 6	16 12 12	20 16 14	46 51 56	12 12 11	2 2 1		A	A	B	C	E	D
	6	3	Local State Nation	36 52 57	20 12 11	22 12 12	8 8 7	14 14 12	0 1 1		B	B	C	D	E	A
	7	2	Local State Nation	8 12 14	14 9 8	66 63 64	0 5 5	10 10 9	2 1 1		A	A	B	D	E	C
	8	4	Local State Nation	18 11 11	22 46 49	38 24 21	14 12 13	8 6 6	0 1 1		A	A	C	D	E	B
	9	3	Local State Nation	8 6 7	14 17 17	6 8 6	58 52 55	10 16 15	4 1 1		A	A	B	C	E	D
	10	4	Local State Nation	12 16 16	16 7 7	22 19 16	10 9 9	40 46 50	0 2 2		A	A	B	C	D	E
	11	4	Local State Nation	12 17 17	24 22 23	8 13 13	48 41 41	8 5 4	0 2 2		A	A	B	C	E	D
	12	4	Local State Nation	10 11 12	28 27 26	42 43 43	4 6 5	16 12 11	0 2 2		A	A	B	D	E	C
	13	5	Local State Nation	26 17 18	16 11 11	34 39 39	10 7 6	14 23 23	0 3 3		A	A	B	D	E	C
	14	4	Local State Nation	12 24 26	16 7 12	6 7 7	54 44 43	12 12 10	0 1 2		A	A	B	C	E	D
	15	5	Local State Nation	6 9 10	18 24 22	28 21 19	14 31 12	34 31 33	0 3 3		A	A	B	C	D	E
	16	5	Local State Nation	28 26 31	28 33 33	20 22 19	18 14 13	4 3 2	2 2 3		A	A	C	D	E	B
	17	6	Local State Nation	18 22 21	28 31 30	30 8 31	8 8 7	16 8 2	0 3 3		A	A	B	D	E	C
	18	6	Local State Nation	26 26 25	8 8 7	36 36 39	16 16 16	8 9 8	6 5 5		B	B	C	D	E	A
	19	6	Local State Nation	26 16 17	20 23 22	20 23 25	24 22 22	8 11 9	2 5 6		A	A	B	D	E	C
	20	7	Local State Nation	12 13 13	20 19 17	24 31 28	22 18 20	0 4 5			A	A	B	C	D	E
	21	2	Local State Nation	70 69 67	8 5 5	2 6 7	14 14 14	2 2 3			B	B	C	D	E	A
	22	2	Local State Nation	2 3 2	6 3 3	10 5 5	68 68 66	14 19 20	0 2 3		A	A	B	C	E	D
	23	1	Local State Nation	8 4 4	4 6 7	6 5 5	2 8 8	78 75 72	2 3 5		A	A	B	C	D	E
	24	3	Local State Nation	4 8 8	12 13 14	8 8 7	10 14 12	62 53 52	4 6 7		A	A	B	C	D	E

Note that the total percentage of all answer choices may not always add up to exactly 100% due to rounding procedures.

Note that the term Local refers to your school.

ANALYSIS OF INCORRECT WRITING SKILLS ANSWERS

KEY	Question	Difficulty	Group	Percent of Answers						Omitted	Distribution of Answers				Correct Answer
				A	B	C	D	E							
											20%	40%	60%	80%	
SECTION 5	25	2	Local	64	4	10	8	8	6	B	C	D	E	A	
			State	66	8	4	8	10	5	B	C	D	E	A	
			Nation	64	7	4	8	11	6	B	C	D	E	A	
	26	3	Local	10	18	2	50	16	4	A	B	C	E	D	
			State	14	9	5	50	19	4	A	B	C	E	D	
			Nation	15	7	4	48	20	5	A	B	C	E	D	
	27	3	Local	60	6	8	6	16	4	B	C	D	E	A	
			State	54	10	8	2	21	5	B	C	D	E	A	
			Nation	55	10	8	2	18	7	B	C	D	E	A	
	28	3	Local	12	8	10	4	62	4	A	B	C	D	E	
			State	12	9	8	6	58	6	A	B	C	D	E	
			Nation	14	10	8	5	55	8	A	B	C	D	E	
	29	5	Local	24	8	16	12	36	4	B	C	D	E	A	
			State	29	6	16	10	33	6	B	C	D	E	A	
			Nation	27	6	15	8	36	8	B	C	D	E	A	
	30	6	Local	30	8	20	6	30	6	B	C	D	E	A	
			State	27	9	17	4	37	7	B	C	D	E	A	
			Nation	27	10	15	3	36	9	B	C	D	E	A	
	31	5	Local	4	30	8	14	30	14	A	C	D	E	B	
			State	4	29	14	17	27	9	A	C	D	E	B	
			Nation	4	28	15	15	26	11	A	C	D	E	B	
	32	7	Local	8	8	16	10	50	8	A	C	D	E	B	
			State	5	20	12	8	47	8	A	C	D	E	B	
			Nation	6	19	13	8	44	11	A	C	D	E	B	
	33	8	Local	2	22	6	4	60	6	A	C	D	E	B	
			State	6	13	24	7	42	8	A	C	D	E	B	
			Nation	6	12	21	6	45	11	A	C	D	E	B	
	34	8	Local	62	8	8	6	6	10	A	B	C	D	E	
			State	61	7	9	3	13	8	A	B	C	D	E	
			Nation	59	6	8	3	13	12	A	B	C	D	E	
	35	3	Local	22	12	32	12	10	12	A	B	D	E	C	
			State	17	13	43	10	7	12	A	B	D	E	C	
			Nation	16	10	45	9	5	15	A	B	D	E	C	
	36	5	Local	6	20	16	34	12	12	A	B	C	E	D	
			State	14	13	18	32	10	13	A	B	C	E	D	
			Nation	16	12	16	31	8	16	A	B	C	E	D	
	37	6	Local	26	20	18	20	2	14	A	B	C	D	E	
			State	30	13	27	11	5	14	A	B	C	D	E	
			Nation	33	12	23	10	4	18	A	B	C	D	E	
	38	5	Local	26	20	12	16	12	14	A	C	D	E	B	
			State	29	23	9	8	13	18	A	C	D	E	B	
			Nation	26	25	9	8	12	20	A	C	D	E	B	
	39	2	Local	10	10	44	14	8	14	A	B	D	E	C	
			State	7	6	52	8	11	17	A	B	D	E	C	
			Nation	6	6	52	8	9	20	A	B	D	E	C	

Note that the total percentage of all answer choices may not always add up to exactly 100% due to rounding procedures.

Note that the term Local refers to your school.

KEY

KEY	Skills	Comparative Performance				
					National average	
					Below national average	Exceeds national average
	W1 Being precise and clear				<i>f</i> X	
	W2 Following conventions in writing				<i>f</i> X	
	W3 Recognizing logical connections within sentences and passages				<i>f</i> X	
	W4 Using verbs correctly				X <i>f</i>	
	W5 Recognizing improper pronoun use				X <i>f</i>	
	W7 Understanding complicated sentence structures				X <i>f</i>	
	W9 Understanding the structure of sentences with abstract ideas				X <i>f</i>	
	W10 Understanding the structure of sentences that relate to science or math				X <i>f</i>	
	W11 Understanding the structure of sentences that relate to the arts				<i>f</i> X	
WRITING						

WRITING

Generated 12/13/2009 © Copyright The College Board 2009