

PSAT/NMSQT®

**SUMMARY OF
ANSWERS & SKILLS**
PSAT/NMSQT SOAS REPORT 2009

**BOOTHBAY REGION HIGH SCHOOL (200145)
CLASS OF 2011**

This online SOAS report details the performance of 50 students from the 11th grade. This report provides a closer look at the level of your students' skills when they took the PSAT/NMSQT this past October. The comparative information can give you valuable insights into your students' performance and assist in identifying curriculum needs to address academic weaknesses that may have been identified through this assessment.

This report focuses on student skills as it analyzes answers across each grade of students, providing insights into how well students are understanding and applying the skills taught in your curriculum. When shared with teachers, especially as a companion to the Student Data File (comprehensive data, including the responses of each student to every question), this report can inform the instructional needs within the classroom.

What Is Included?

This report is divided into three sections representing the academic areas tested: Critical Reading (pages 2-6), Mathematics (pages 7-11), and Writing Skills (pages 12-16). Within each area, the information is presented from three different perspectives: an analysis of correct answers; an analysis of incorrect answers; and a comparative analysis of skills.

These analyses include comparisons between your students' performance and the nation, your state, and a comparable group. The comparable group is made up of a random sample of 200,000 PSAT/NMSQT test-takers that illustrates your school's expected performance on each question. There is no demographic information (e.g., school size, school type, location, etc.) taken into account during the selection of this sample. A series of statistical analyses are performed to create a group of students from this sample that performed similarly to your students. Differences between your students' performance and the comparable group (remember, the comparable group represents your students' expected performance) are then plotted in the graphs presented on pages 3, 8, and 13 of this report. The plot for each question in the graph shows whether your students demonstrated higher performance than the comparable group (above 5%, or in the non-shaded area), similar performance to the comparable group (within 5%, or in the light-gray area), or lower performance (below 5%, or in the dark gray area). This type of presentation makes it easy for you to identify the questions that your students performed the same as, above, or below what would have been expected of a group with your students' performance profile.

Additional Resources to Supplement the SOAS

SOAS Tutorial (PowerPoint or pdf formats)

Review the SOAS Tutorial prior to viewing your reports. It will serve as an introduction to the various tables and data you are about to see, as well as provide suggestions for using the reports and interpreting data. Available in the "Resources" sidebar on the SOAS website.

Test-Question Detail Report (excel or pdf formats)

Have this supplemental item available while you are reviewing your SOAS report. It contains a lot of detail about each question, including the skills it measures and the question's difficulty level. It also contains work space to jot down problem questions that may need additional review. Available in the "Resources" sidebar on the SOAS website.

PSAT/NMSQT Test Book

Have a PSAT/NMSQT test book on hand while you are reviewing your SOAS report so that you can cross-reference information from the SOAS report, such as test questions and answer choices. We also recommend that educators actually take the test themselves prior to reviewing the SOAS and note the questions they feel may be difficult for students.

Answer Explanations Online

Review the complete answer explanations located in the My Online Score Report section of the My College QuickStart demo account. These explanations help clarify the skills and knowledge base that are needed to respond to the questions successfully.



PSAT/NMSQT 2009 CRITICAL READING SECTIONS

We recommend that you review the critical reading sections of the test prior to reviewing this report. It will familiarize you with the questions and aid in identifying specific test questions that may warrant special attention.

Pages 3 - 6 present three different perspectives on student performance on the October 2009 PSAT/NMSQT critical reading sections. These perspectives help educators look beyond student scores to identify their students' skills and areas for improvement, to ultimately support curriculum planning. Below is a description of each section and suggestions for further review.

Analysis of Correct Answers

This section contains a review of your group's answers to each critical reading question. It shows the percent of your group that responded correctly on each question, as well as the percent of students who responded correctly in your state, in the nation, and in a comparable group.

Pay particular attention to: (1) questions that appear in the darker gray area on the second graph "Difference between local and comparable groups", as this depicts where your group performed below expectation; and (2) to questions on the first graph where they performed below the state/national percentages. The left most table shows the percent correct for each group as well as the difficulty level (1-easy to 9-difficult) for each question.

Analysis of Incorrect Answers

This section provides insight into the problems students might have had with each critical reading question. In the "Percent of Answers" column, the correct answer is highlighted in a box and calls out the percent answered correctly by your group, your state, and the nation. You can also look at the incorrect answers to see the percentage of students that answered incorrectly (in your group and compared to other students in your state and the nation). The graph on the right is a visual representation and allows you to easily identify questions that your students most commonly missed and what their incorrect responses were. After you identify the commonly missed questions, go back to the test book and review the question and the incorrect answers to identify common problems with concepts, content, or basic reasoning. You may also want to reference the Test Question Detail for more insight into each question.

Note: Critical reading question types: Sentence completion (1-8, 25-29); Passage-based reading (9-24, 30-48).

Analysis of Skills

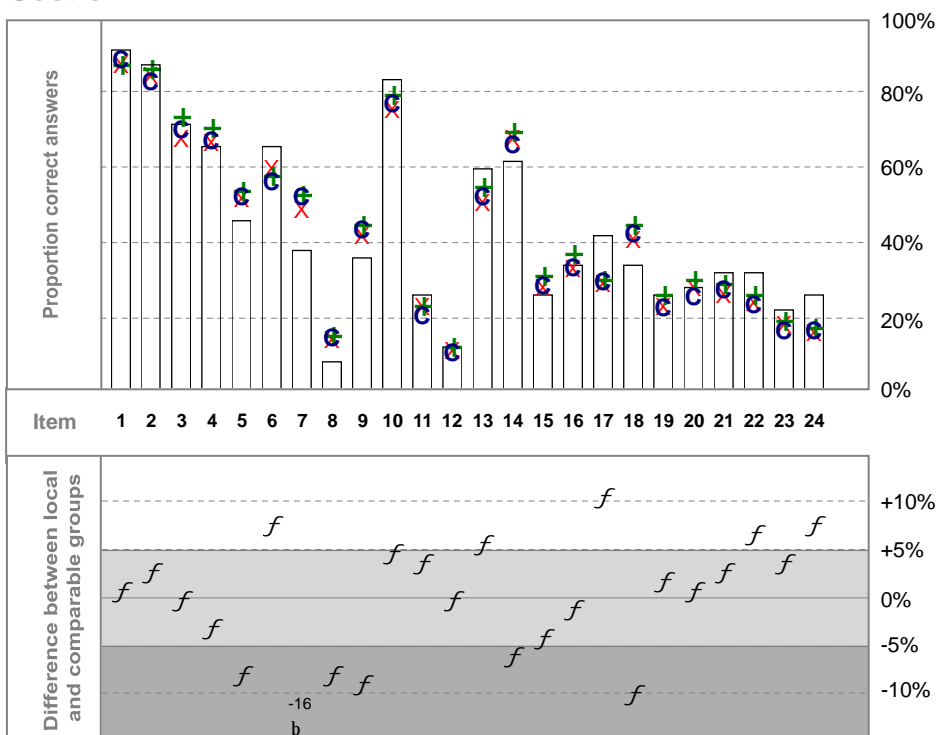
This section gives you information on the skills covered by the critical reading sections of the PSAT/NMSQT. The nation's performance is represented by the vertical line, and is the base, or average, performance on each skill. For each reported skill, you can see how your students performed compared to the nation and to the state. Any skills in which your students performed below (to the left of) the nation or state should probably be reviewed. Focus on those skills where your students' performance was the most noticeably below the state, and then those most noticeably below the nation. This skills report will confirm much of what you learned on the previous pages of question analyses. It may also provide additional insights into problem areas not previously addressed.

Note: The critical reading skills noted in this report are the skills that appear with high enough frequency for aggregate reporting

ANALYSIS OF CORRECT CRITICAL READING ANSWERS

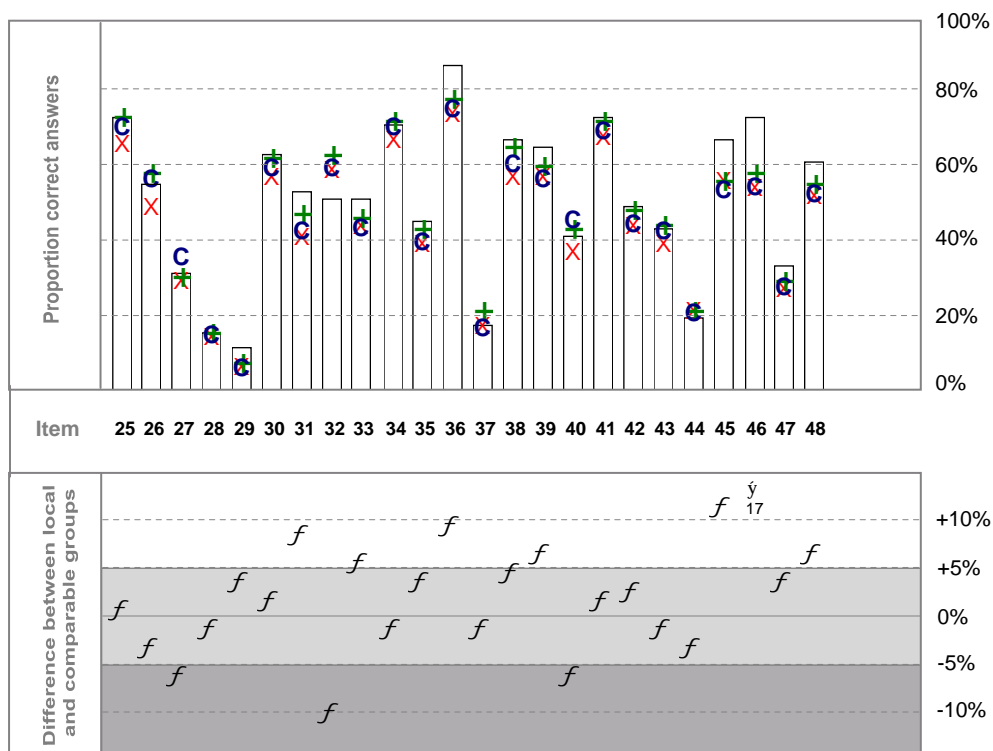
KEY	Question	Difficulty	Correct Answer	Percent Correct			
				Local f	State X	Nation +	Comp Group C
SECTION 1	1	1	E	92	90	90	91
	2	1	C	88	87	89	85
	3	3	C	72	70	76	72
	4	3	C	66	69	73	69
	5	5	E	46	54	56	54
	6	4	E	66	62	60	58
	7	5	A	38	51	55	54
	8	8	D	8	16	17	16
	9	5	E	36	44	47	45
	10	2	A	84	78	82	79
	11	8	C	26	25	25	22
	12	9	B	12	13	14	12
	13	4	C	60	53	57	54
	14	3	A	62	70	72	68
	15	7	B	26	30	33	30
	16	6	C	34	35	39	35
	17	7	E	42	31	32	31
	18	5	C	34	43	47	44
	19	7	B	26	25	28	24
	20	6	D	28	30	32	27
	21	6	C	32	28	31	29
	22	7	E	32	26	28	25
	23	8	D	22	20	21	18
	24	7	A	26	18	19	18

Section 1



SECTION 3	25	3	D	74	69	76	73
	26	4	A	56	52	61	59
	27	6	A	32	32	33	38
	28	8	B	16	17	18	17
	29	9	D	12	9	10	8
	30	4	E	64	60	65	62
	31	5	E	54	44	50	45
	32	4	A	52	62	66	62
	33	5	B	52	47	49	46
	34	3	A	72	70	75	73
	35	5	D	46	42	46	42
	36	2	B	88	77	81	78
	37	8	D	18	20	24	19
	38	4	E	68	60	68	63
	39	4	A	66	60	63	59
	40	5	A	42	40	46	48
	41	3	E	74	71	75	72
	42	5	B	50	47	51	47
	43	5	B	44	42	47	45
	44	7	A	20	24	24	23
	45	4	C	68	59	59	56
	46	3	C	74	57	61	57
	47	6	A	34	30	32	30
	48	3	E	62	55	58	55

Section 3



Note that the term Local refers to your school.

See page 1 for a definition of comparable group.

ANALYSIS OF INCORRECT CRITICAL READING ANSWERS

KEY	Question	Difficulty	Group	Percent of Answers						Omitted	Distribution of Answers				Correct Answer
				A	B	C	D	E			20%	40%	60%	80%	
SECTION 1	1	1	Local	0	0	4	4	92	0	C D			E		
			State	2	2	3	3	90	0	A B C D			E		
			Nation	2	2	2	4	90	1	A B C D			E		
	2	1	Local	0	4	88	6	2	0	B D E			C		
			State	1	2	87	4	5	0	A B D E			C		
			Nation	1	2	89	4	4	0	B D E			C		
	3	3	Local	6	8	72	4	2	8	A B D E			C		
			State	9	10	70	3	3	6	A B D E			C		
			Nation	8	7	76	2	2	4	A B D E			C		
	4	3	Local	12	16	66	0	0	6	A B			C		
			State	9	13	69	2	5	3	A B D E			C		
			Nation	7	12	73	2	4	3	A B D E			C		
	5	5	Local	20	14	4	12	46	4	A B C D			E		
			State	17	12	3	9	54	5	A B C D			E		
			Nation	16	11	3	8	56	6	A B C D			E		
	6	4	Local	0	2	28	4	66	0	B C D			E		
			State	3	3	27	5	62	1	A B C D			E		
			Nation	2	2	31	4	60	2	A B C D			E		
	7	5	Local	38	4	10	28	10	10	B C D E			A		
			State	51	9	9	18	5	9	B C D E			A		
			Nation	55	8	8	15	5	8	B C D E			A		
	8	8	Local	16	24	24	8	6	22	A B C D			D		
			State	15	18	19	16	7	24	A B C D			D		
			Nation	14	17	21	17	8	24	A B C D			D		
9	5	Local	14	26	10	14	36	0	A B C D			E			
		State	9	27	10	8	44	3	A B C D			E			
		Nation	10	25	9	6	47	3	A B C D			E			
10	2	Local	84	4	4	8	0	0	B C D E			A			
		State	78	8	5	5	2	2	B C D E			A			
		Nation	82	7	4	4	1	2	B C D E			A			
11	8	Local	38	22	26	6	4	4	A B C D			C			
		State	40	17	25	8	4	7	A B C D			C			
		Nation	42	17	25	7	3	7	A B C D			C			
12	9	Local	12	12	24	14	38	0	A C D E			B			
		State	14	13	26	15	28	4	A C D E			B			
		Nation	11	14	24	15	31	5	A C D E			B			
13	4	Local	8	8	60	14	4	6	A B C D			C			
		State	10	17	53	10	5	5	A B C D			C			
		Nation	10	14	57	9	4	6	A B C D			C			
14	3	Local	62	12	8	12	6	0	B C D E			A			
		State	70	8	8	7	5	3	B C D E			A			
		Nation	72	8	7	5	4	5	B C D E			A			
15	7	Local	16	26	22	4	14	18	A C D E			B			
		State	23	30	15	6	12	14	A C D E			B			
		Nation	22	33	14	5	11	16	A C D E			B			
16	6	Local	14	10	34	34	6	2	A B C D			C			
		State	14	10	35	18	14	9	A B C D			C			
		Nation	14	8	39	17	12	11	A B C D			C			
17	7	Local	4	20	6	20	42	8	A B C D			E			
		State	11	21	13	14	31	10	A B C D			E			
		Nation	11	20	11	13	32	13	A B C D			E			
18	5	Local	14	18	34	4	8	22	A B C D			C			
		State	14	13	43	6	9	16	A B C D			C			
		Nation	13	10	47	4	7	18	A B C D			C			
19	7	Local	16	26	14	18	14	12	A C D E			B			
		State	15	25	11	19	12	18	A C D E			B			
		Nation	14	28	10	18	10	21	A C D E			B			
20	6	Local	16	14	14	28	8	20	A B C D			D			
		State	10	11	9	30	20	20	A B C D			D			
		Nation	7	10	9	32	19	23	A B C D			D			
21	6	Local	10	14	32	14	24	6	A B C D			C			
		State	16	13	28	9	18	15	A B C D			C			
		Nation	16	13	31	6	15	19	A B C D			C			
22	7	Local	12	10	12	22	32	12	A B C D			E			
		State	18	12	10	12	26	23	A B C D			E			
		Nation	17	9	9	12	28	26	A B C D			E			
23	8	Local	6	48	16	22	4	4	A B C D			D			
		State	7	34	14	20	5	21	A B C D			D			
		Nation	6	32	13	21	4	24	A B C D			D			
24	7	Local	26	6	30	20	6	12	B C D E			A			
		State	18	7	28	7	24	24	B C D E			A			
		Nation	19	5	31	12	5	27	B C D E			A			

Note that the total percentage of all answer choices may not always add up to exactly 100% due to rounding procedures.

Note that the term Local refers to your school.

ANALYSIS OF INCORRECT CRITICAL READING ANSWERS

KEY	Question	Difficulty	Group	Percent of Answers						Omitted	Distribution of Answers				Correct Answer
				A	B	C	D	E			20%	40%	60%	80%	
SECTION 3	25	3	Local State Nation	4 4 2	8 9 8	4 6 5	74 69 76	8 11 8	2 2 1	A A A	B B B	C C C	E E E	D D D	
	26	4	Local State Nation	56 52 61	24 17 12	6 11 8	7 15 15	8 4 2	2 2 2	B B B	C C C	D D D	E E E	A A A	
	27	6	Local State Nation	32 32 33	14 10 8	22 20 19	8 10 9	10 12 14	14 16 18	B B B	C C C	D D D	E E E	A A A	
	28	8	Local State Nation	18 22 25	16 17 18	18 17 16	10 12 9	22 16 15	16 17 18	A A A	C C C	D D D	E E E	B B B	
	29	9	Local State Nation	6 14 14	22 16 11	28 27 26	12 9 10	22 22 24	10 12 16	A A A	B B B	C C C	E E E	D D D	
	30	4	Local State Nation	14 15 12	6 7 5	4 10 4	10 60 65	2 3 3	A A A	B B B	C C C	D D D	E E E		
	31	5	Local State Nation	10 10 8	14 17 17	14 12 10	8 14 11	54 44 50	0 4 4	A A A	B B B	C C C	D D D	E E E	
	32	4	Local State Nation	52 62 66	14 10 11	12 11 9	16 8 7	6 7 5	0 2 2	B B B	C C C	D D D	E E E	A A A	
	33	5	Local State Nation	16 15 15	52 47 49	4 11 9	20 19 19	8 6 4	0 4 4	A A A	C C C	D D D	E E E	B B B	
	34	3	Local State Nation	72 70 75	6 6 5	12 10 9	8 8 6	2 3 2	0 3 4	B B B	C C C	D D D	E E E	A A A	
	35	5	Local State Nation	20 19 16	4 7 7	16 13 12	46 42 46	12 17 17	2 2 3	A A A	B B B	C C C	E E E	D D D	
	36	2	Local State Nation	2 8 8	88 77 81	8 6 4	0 5 4	2 3 2	0 2 2	A A A	C C C	E D E	B B B		
	37	8	Local State Nation	20 12 12	18 19 17	16 14 12	18 20 24	22 30 30	6 5 6	A A A	B B B	C C C	E E E	D D D	
	38	4	Local State Nation	2 6 4	2 7 5	6 8 5	18 16 14	68 60 68	4 3 4	A A A	B B B	C C C	D D D	E E E	
	39	4	Local State Nation	66 60 63	8 14 13	10 8 7	2 7 6	14 8 7	0 3 4	B B B	C C C	D D D	E E E	A A A	
	40	5	Local State Nation	42 40 46	10 13 10	14 13 11	12 10 8	10 11 11	12 14 14	B B B	C C C	D D D	E E E	A A A	
	41	3	Local State Nation	14 9 7	6 7 6	2 4 3	2 5 4	74 71 75	2 4 5	A A A	B B B	C C C	D D D	E E E	
	42	5	Local State Nation	12 19 19	50 47 51	0 5 3	8 7 5	26 18 17	4 5 6	A A A	D D D	E E E	B B B		
	43	5	Local State Nation	6 8 6	44 42 47	14 16 14	4 8 8	24 16 12	8 9 13	A A A	C C C	D D D	E E E	B B B	
	44	7	Local State Nation	20 24 24	10 10 9	0 5 5	38 28 29	30 24 21	2 9 12	B B B	C C C	D D D	E E E	A A A	
	45	4	Local State Nation	6 10 8	2 9 8	68 59 59	16 9 9	2 4 3	6 10 13	A A A	B B B	D D D	E E E	C C C	
	46	3	Local State Nation	4 11 7	8 9 7	74 57 61	2 5 4	4 6 6	8 12 16	A A A	B B B	D D D	E E E	C C C	
	47	6	Local State Nation	34 30 32	28 19 19	10 14 12	0 8 6	16 13 10	12 16 21	B B B	C C C	D D D	E E E	A A A	
	48	3	Local State Nation	4 5 4	6 8 6	10 10 8	10 55 58	8 14 18	A A A	B B B	C C C	D D D	E E E		

Note that the total percentage of all answer choices may not always add up to exactly 100% due to rounding procedures.

Note that the term Local refers to your school.

KEY	Skills	Comparative Performance					
					National average		
					Below national average	Exceeds national average	
CRITICAL READING	CR1 Understanding main ideas in a reading passage				X f		
	CR3 Comparing and contrasting ideas presented in two passages				f X		
	CR4 Understanding the use of examples				f X		
	CR5 Recognizing the purpose of various writing strategies				X f		
	CR6 Applying ideas presented in a reading passage				f X		
	CR7 Determining an author's purpose or perspective				f X		
	CR9 Distinguishing conflicting viewpoints				X f		
	CR10 Being thorough				f X		
	CR11 Understanding difficult vocabulary				f X		
	CR12 Understanding how negative words, suffixes, and prefixes affect sentences				f X		
	CR16 Recognizing a definition when it is presented in a sentence				f X		
	CR17 Understanding sentences that deal with abstract ideas				f X		
	CR19 Comprehending long sentences				f X		

6/16

PSAT/NMSQT 2009 MATHEMATICS SECTIONS

We recommend that you review the mathematics sections of the test prior to reviewing this report. It will familiarize you with the questions and aid in identifying specific test questions that may warrant special attention.

Pages 8 - 11 present three different perspectives on student performance on the October 2009 PSAT/NMSQT mathematics sections. These perspectives help educators look beyond student scores to identify their students' skills and areas for improvement, to ultimately support curriculum planning. Below is a description of each section and suggestions for further review.

Analysis of Correct Answers

This section contains a review of your group's answers to each mathematics question. It shows the percent of your group that responded correctly on each question, as well as the percent of students who responded correctly in your state, in the nation, and in a comparable group.

Pay particular attention to: (1) questions that appear in the darker gray area on the second graph "Difference between local and comparable groups", as this depicts where your group performed below expectation; and (2) to questions on the first graph where they performed below the state/national percentages. The left most table shows the percent correct for each group as well as the difficulty level (1-easy to 9-difficult) for each question.

Analysis of Incorrect Answers

Multiple-choice questions (1-28)

This section provides more insight into the problems students might have had with individual math questions. The columns of numbers on the left will give you specific percentages showing the popularity of each incorrect answer. The graph will allow you to easily locate those questions on which your group had the most difficulty, and what their chosen responses were.

Student-produced response questions (Grid-ins) (29-38)

This section provides more insight into the problems students might have had with the individual math questions where they had to create their own answers, rather than choose from multiple choices. The columns of numbers on the left provide specific percentages of correct answers, the most popular incorrect answer, all other answers combined, and the omits. The graph allows you to easily identify the questions that your group had the most difficulty with.

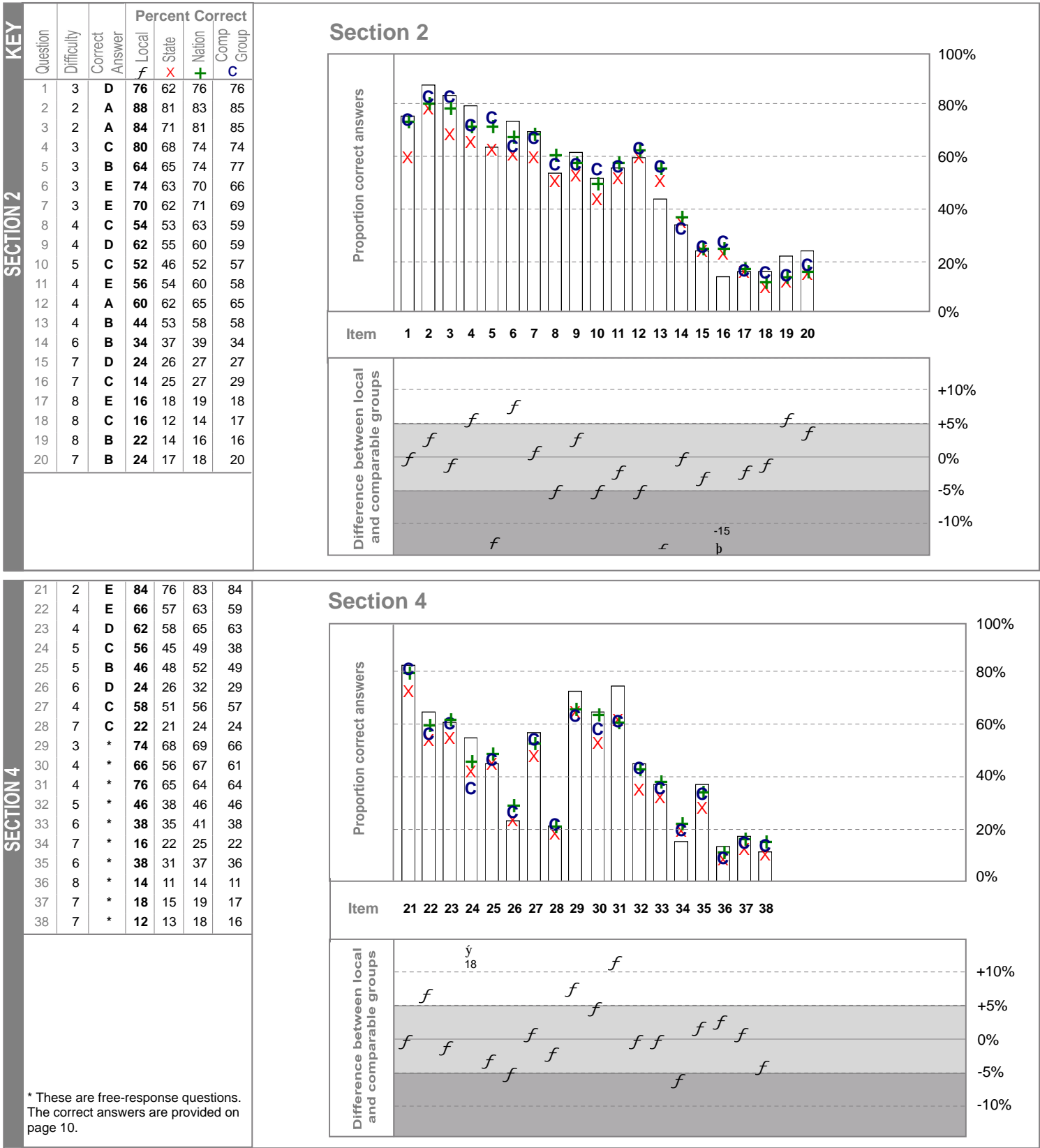
A suggestion: use the table to identify your students' most common incorrect response; also look at the most common incorrect response for the state and the nation; when the most common incorrect response for the state and nation is different than that of your group, go back to the test book and review the question and the incorrect answers to identify common problems with concepts, content, or basic reasoning. You may also want to reference the Test Question Detail for more insight into each question.

Analysis of Skills

This section gives you information on the skills covered by the math sections of the PSAT/NMSQT. The nation's performance is represented by the vertical line, and is the base, or average, performance on each skill. For each reported skill, you can see how your students performed compared to the nation and to the state. Any skills in which your students performed below (to the left of) the nation or state should probably be reviewed. Focus on those skills where your students' performance was the most noticeably below the state, and then those most noticeably below the nation. This skills report will confirm much of what you learned on the previous pages of question analyses. It may also provide additional insights into problem areas not previously addressed.

Note: The math skills noted in this report are the skills that appear with high enough frequency for aggregate reporting

ANALYSIS OF CORRECT MATHEMATICS ANSWERS



Note that the term Local refers to your school.
See page 1 for a definition of comparable group.

ANALYSIS OF INCORRECT MATHEMATICS ANSWERS

KEY	Question	Difficulty	Group	Percent of Answers						Omitted	Distribution of Answers				Correct Answer
				A	B	C	D	E							
											20%	40%	60%	80%	
SECTION 2	1	3	Local	8	2	14	76	0	0		A B C			D	
			State	10	5	16	62	4	2		A B C E			D	
			Nation	5	3	11	76	4	1		A B C E			D	
	2	2	Local	88	0	6	2	2	2		C D E		A		
			State	81	4	5	6	2	4		B C D E		A		
			Nation	83	3	4	5	2	4		B C D E		A		
	3	2	Local	84	2	6	8	0	0		B C D		A		
			State	71	7	7	12	1	2		B C D		A		
			Nation	81	4	4	9	1	1		B C D		A		
	4	3	Local	2	2	80	16	0	0		A B D		C		
			State	2	5	68	20	3	2		A B D E		C		
			Nation	2	4	74	17	2	2		A B D E		C		
	5	3	Local	6	64	4	18	4	4		A C D E		B		
			State	6	65	6	15	5	3		A C D E		B		
			Nation	4	74	5	12	3	3		A C D E		B		
	6	3	Local	10	6	2	6	74	2		A B C D		E		
			State	6	8	9	7	63	7		A B C D		E		
			Nation	4	6	8	5	70	6		A B C D		E		
	7	3	Local	0	0	16	12	70	2		C D		E		
			State	7	5	8	13	62	6		A B C D		E		
			Nation	5	3	7	10	71	4		A B C D		E		
	8	4	Local	10	12	54	6	8	10		A B D E		C		
			State	9	12	53	7	11	9		A B D E		C		
			Nation	9	9	63	5	7	6		A B D E		C		
	9	4	Local	10	12	4	62	8	4		A B C E		D		
			State	7	12	8	55	15	3		A B C E		D		
			Nation	6	10	7	60	14	3		A B C E		D		
	10	5	Local	2	10	52	12	4	20		A B D E		C		
			State	3	11	46	13	5	22		A B D E		C		
			Nation	3	11	52	11	4	19		A B D E		C		
	11	4	Local	18	2	14	6	56	4		A B C D		E		
			State	11	7	15	6	54	7		A B C D		E		
			Nation	8	7	14	5	60	7		A B C D		E		
	12	4	Local	60	0	0	6	32	2		D E		A		
			State	62	4	4	3	23	4		B C D E		A		
			Nation	65	3	3	2	21	5		B C D E		A		
	13	4	Local	12	44	4	22	10	8		A C D E		B		
			State	4	53	7	22	4	11		A C D E		B		
			Nation	4	58	5	19	4	10		A C D E		B		
	14	6	Local	4	34	34	4	8	16		A C D E		B		
			State	5	37	30	5	6	18		A C D E		B		
			Nation	4	39	34	3	5	15		A C D E		B		
	15	7	Local	14	12	22	24	18	10		A B C E		D		
			State	10	14	22	26	16	12		A B C E		D		
			Nation	10	12	21	27	14	17		A B C E		D		
	16	7	Local	14	36	14	4	2	30		A B D E		C		
			State	10	24	25	10	5	26		A B D E		C		
			Nation	9	28	27	8	4	24		A B D E		C		
	17	8	Local	12	36	6	18	16	12		A B C D		E		
			State	13	28	12	15	18	15		A B C D		E		
			Nation	12	27	11	14	19	16		A B C D		E		
	18	8	Local	2	58	16	6	6	12		A B D E		C		
			State	5	52	12	11	4	16		A B D E		C		
			Nation	5	50	14	10	3	19		A B D E		C		
	19	8	Local	28	22	12	8	12	18		A C D E		B		
			State	17	14	11	10	23	26		A C D E		B		
			Nation	15	16	10	8	21	30		A C D E		B		
	20	7	Local	10	24	20	12	12	22		A C D E		B		
			State	20	17	16	8	10	29		A C D E		B		
			Nation	20	18	15	7	9	32		A C D E		B		

Note that the total percentage of all answer choices may not always add up to exactly 100% due to rounding procedures.

Note that the term Local refers to your school.

ANALYSIS OF INCORRECT MATHEMATICS ANSWERS

KEY	Question	Difficulty	Group	Percent of Answers						Omitted	Distribution of Answers				Correct Answer	<div></div>
				A	B	C	D	E			20%	40%	60%	80%		
SECTION 4	21	2	Local	8	6	0	0	84	2		A	B			E	
			State	14	4	3	3	76	1		A		B	C	D	
			Nation	9	3	2	2	83	1		A	B	C	D		E
	22	4	Local	6	8	18	2	66	0		A	B		C	D	
			State	6	8	17	4	57	8		A	B		C	D	
			Nation	6	6	13	4	63	8		A	B		C	D	
	23	4	Local	4	8	12	62	4	10		A	B		C	E	
			State	7	9	13	58	2	11		A	B		C	E	
			Nation	6	6	11	65	2	10		A	B		C	E	
	24	5	Local	0	16	56	6	22	0		B		D		E	
			State	8	12	45	9	24	3		A	B		D		E
			Nation	7	9	49	5	27	2		A	B		D		E
25	5	Local	10	46	6	32	2	4		A		C		D		
		State	22	48	6	17	2	4		A		C		D		
		Nation	20	52	5	18	2	4		A		C		D		
26	6	Local	56	14	4	24	2	0			A		A		B	
		State	44	23	3	26	1	3			A		A		B	
		Nation	41	22	2	32	1	3			A		C		D	
27	4	Local	0	14	58	14	6	8		B		D		E		
		State	3	17	51	17	5	8		A	B		D		E	
		Nation	2	17	56	14	4	8		A	B		D		E	
28	7	Local	26	12	22	8	28	4			A		B		D	
		State	29	11	21	13	18	8			A		B		D	
		Nation	26	9	24	13	21	7			A		B		D	

ANALYSIS OF INCORRECT ANSWERS ON THE STUDENT-PRODUCED RESPONSE

KEY	Question	Group	Correct		Most Incorrect				Difficulty	Distribution of Answers			
			Answer(s)	%	Answer	%	Other Incorrect	Omitted		20%	40%	60%	80%
SECTION 4	29	Local State Nation	7150	74 68 69	4825 6975 6975	8 5 5	16 24 22	2 4 5	3	<div><div></div><div></div><div></div><div></div><div></div><div></div><div></div><div></div><div></div><div></div><div></div><div></div><div></div><div></div><div></div><div></div><div></div><div></div><div></div><div></div><div></div><div></div><div></div><div></div><div></div><div></div><div></div><div></div><div></div><div></div><div></div><div></div><div></div><div></div><div></div><div></div><div></div><div></div><div></div><div></div><div></div><div></div><div></div><div></div><div></div><div></div><div></div><div></div><div></div><div></div><div></div><div></div><div></div><div></div><div></div><div></div><div></div><div></div><div></div><div></div><div></div><div></div><div></div><div></div><div></div><div></div><div></div><div></div><div></div><div></div><div></div><div></div><div></div><div></div><div></div><div></div><div></div><div></div><div></div><div></div><div></div><div></div><div></div><div></div><div></div><div></div><div></div><div></div><div></div><div></div><div></div><div></div><div></div><div></div><div></div><div></div><div></div><div></div><div></div><div></div><div></div><div></div><div></div><div></div><div></div><div></div><div></div><div></div><div></div><div></div><div></div><div></div><div></div><div></div><div></div><div></div><div></div><div></div><div></div><div></div><div></div><div></div><div></div><div></div><div></div><div></div><div></div><div></div><div></div><div></div><div></div><div></div><div></div><div></div><div></div><div></div><div></div><div></div><div></div><div></div><div></div><div></div><div></div><div></div><div></div><div></div><div></div><div></div><div></div><div></div><div></div><div></div><div></div><div></div><div></div><div></div><div></div><div></div><div></div><div></div><div></div><div></div><div></div><div></div><div></div><div></div><div></div><div></div><div></div><div></div><div></div><div></div><div></div><div></div><div></div><div></div><div></div><div></div><div></div><div></div><div></div><div></div><div></div><div></div><div></div><div></div><div></div><div></div><div></div><div></div><div></div><div></div><div></div><div></div><div></div><div></div><div></div><div></div><div></div><div></div><div></div><div></div><div></div><div></div><div></div><div></div><div></div><div></div><div></div><div></div><div></div><div></div><div></div><div></div><div></div><div></div><div></div><div></div><div></div><div></div><div></div><div></div><div></div><div></div><div></div><div></div><div></div><div></div><div></div><div></div><div></div><div></div><div></div><div></div><div></div><div></div><div></div><div></div><div></div><div></div><div></div><div></div><div></div><div></div><div></div><div></div><div></div><div></div><div></div><div></div><div></div><div></div><div></div><div></div><div></div><div></div><div></div><div></div><div></div><div></div><div></div><div></div><div></div><div></div><div></div><div></div><div></div><div></div><div></div><div></div><div></div><div></div><div></div><div></div><div></div><div></div><div></div><div></div><div></div><div></div><div></div><div></div><div></div><div></div><div></div><div></div><div></div><div></div><div></div><div></div><div></div><div></div><div></div><div></div><div></div><div></div><div></div><div></div><div></div><div></div><div></div><div></div><div></div><div></div><div></div><div></div><div></div><div></div><div></div><div></div><div></div><div></div><div></div><div></div><div></div><div></div><div></div><div></div><div></div><div></div><div></div><div></div><div></div><div></div><div></div><div></div><div></div><div></div><div></div><div></div><div></div><div></div><div></div><div></div><div></div><div></div><div></div><div></div><div></div><div></div><div></div><div></div><div></div><div></div><div></div><div></div><div></div><div></div><div></div><div></div><div></div><div></div><div></div><div></div><div></div><div></div><div></div><div></div><div></div><div></div><div></div><div></div><div></div><div></div><div></div><div></div><div></div><div></div><div></div><div></div><div></div><div></div><div></div><div></div><div></div><div></div><div></div><div></div><div></div><div></div><div></div><div></div><div></div><div></div><div></div><div></div><div></div><div></div><div></div><div></div><div></div><div></div><div></div><div></div><div></div><div></div><div></div><div></div><div></div><div></div><div></div><div></div><div></div><div></div><div></div><div></div><div></div><div></div><div></div><div></div><div></div><div></div><div></div><div></div><div></div><div></div><div></div><div></div><div></div><div></div><div></div><div></div><div></div><div></div><div></div><div></div><div></div><div></div><div></div><div></div><div></div><div></div><div></div><div></div><div></div><div></div><div></div><div></div><div></div><div></div><div></div><div></div><div></div><div></div><div></div><div></div><div></div><div></div><div></div><div></div><div></div><div></div><div></div><div></div><div></div><div></div><div></div><div></div><div></div><div></div><div></div><div></div><div></div><div></div><div></div><div></div><div></div><div></div><div></div><div></div><div></div><div></div><div></div><div></div><div></div><div></div><div></div><div></div><div></div><div></div><div></div><div></div><div></div><div></div><div></div><div></div><div></div><div></div><div></div><div></div><div></div><div></div><div></div><div></div><div></div><div></div><div></div><div></div><div></div><div></div><div></div><div></div><div></div><div></div><div></div><div></div><div></div><div></div><div></div><div></div><div></div><div></div><div></div><div></div><div></div><div></div><div></div><div></div><div></div><div></div><div></div><div></div><div></div><div></div><div></div><div></div><div></div><div></div><div></div><div></div><div></div><div></div><div></div><div></div><div></div><div></div><div></div><div></div><div></div><div></div><div></div><div></div><div></div><div></div><div></div><div></div><div></div><div></div><div></div><div></div><div></div><div></div><div></div><div></div><div></div><div></div><div></div><div></div><div></div><div></div><div></div><div></div><div></div><div></div><div></div><div></div><div></div><div></div><div></div><div></div><div></div><div></div><div></div><div></div><div></div><div></div><div></div><div></div><div></div><div></div><div></div><div></div><div></div><div></div><div></div><div></div><div></div><div></div><div></div><div></div><div></div><div></div><div></div><div></div><div></div><div></div><div></div><div></div><div></div><div></div><div></div><div></div><div></div><div></div><div></div><div></div><div></div><div></div><div></div><div></div><div></div><div></div><div></div><div></div><div></div><div></div><div></div><div></div><div></div><div></div><div></div><div></div><div></div><div></div><div></div><div></div><div></div><div></div><div></div><div></div><div></div><div></div><div></div><div></div><div></div><div></div><div></div><div></div><div></div><div></div><div></div><div></div><div></div><div></div><div></div><div></div><div></div><div></div><div></div><div></div><div></div><div></div><div></div><div></div><div></div><div></div><div></div><div></div><div></div><div></div><div></div><div></div><div></div><div></div><div></div><div></div><div></div><div></div><div></div><div></div><div></div><div></div><div></div><div></div><div></div><div></div><div></div><div></div><div></div><div></div><div></div><div></div><div></div><div></div><div></div><div></div><div></div><div></div><div></div><div></div><div></div><div></div><div></div><div></div><div></div><div></div><div></div><div></div><div></div><div></div><div></div><div></div><div></div><div></div><div></div><div></div><div></div><div></div><div></div><div></div><div></div><div></div><div></div><div></div><div></div><div></div><div></div><div></div><div></div><div></div><div></div><div></div><div></div><div></div><div></div><div></div><div></div><div></div><div></div><div></div><div></div><div></div><div></div><div></div><div></div><div></div><div></div><div></div><div></div><div></div><div></div><div></div><div></div><div></div><div></div><div></div><div></div><div></div><div></div><div></div><div></div><div></div><div></div><div></div><div></div><div></div><div></div><div></div><div></div><div></div><div></div><div></div><div></div><div></div><div></div><div></div><div></div><div></div><div></div><div></div><div></div><div></div><div></div><div></div><div></div><div></div><div></div><div></div><div></div><div></div><div></div><div></div><div></div><div></div><div></div><div></div><div></div><div></div><div></div><div></div><div></div><div></div><div></div><div></div><div></div><div></div><div></div><div></div><div></div><div></div><div></div><div></div><div></div><div></div><div></div><div></div><div></div><div></div><div></div><div></div><div></div><div></div><div></div><div></div><div></div><div></div><div></div><div></div><div></div><div></div><div></div><div></div><div></div><div></div><div></div><div></div><div></div><div></div><div></div><div></div><div></div><div></div><div></div><div></div><div></div><div></div><div></div><div></div><div></div><div></div><div></div><div></div><div></div><div></div><div></div><div></div><div></div><div></div><div></div><div></div><div></div><div></div><div></div><div></div><div></div><div></div><div></div><div></div><div></div><div></div><div></div><div></div><div></div><div></div><div></div><div></div><div></div><div></div><div></div><div></div><div></div><div></div><div></div><div></div><div></div><div></div><div></div><div></div><div></div><div></div><div></div><div></div><div></div><div></div><div></div><div></div><div></div><div></div><div></div><div></div><div></div><div></div><div></div><div></div><div></div><div></div><div></div><div></div><div></div><div></div><div></div><div></div><div></div><div></div><div></div><div></div><div></div><div></div><div></div><div></div><div></div><div></div><div></div><div></div><div></div><div></div><div></div><div></div><div></div><div></div><div></div><div></div><div></div><div></div><div></div><div></div><div></div><div></div><div></div><div></div><div></div><div></div><div></div><div></div><div></div><div></div><div></div><div></div><div></div><div></div><div></div><div></div><div></div><div></div><div></div><div></div><div></div><div></div><div></div><div></div><div></div><div></div><div></div><div></div><div></div><div></div><div></div><div></div><div></div><div></div><div></div><div></div><div></div><div></div><div></div><div></div><div></div><div></div><div></div><div></div><div></div><div></div><div></div><div></div><div></div><div></div><div></div><div></div><div></div><div></div><div></div><div></div><div></div><div></div><div></div><div></div><div></div><div></div><div></div><div></div><div></div><div></div><div></div><div></div><div></div><div></div><div></div><div></div><div></div><div></div><div></div><div></div><div></div><div></div><div></div><div></div><div></div><div></div><div></div><div></div><div></div><div></div><div></div><div></div><div></div><div></div><div></div><div></div><div></div><div></div><div></div><div></div><div></div><div></div><div></div><div></div><div></div><div></div><div></div><div></div><div></div><div></div><div></div><div></div><div></div><div></div><div></div><div></div><div></div><div></div><div></div><div></div><div></div><div></div><div></div><div></div><div></div><div></div><div></div><div></div><div></div><div></div><div></div><div></div><div></div><div></div><div></div></div>			

Note that the total percentage of all answer choices may not always add up to exactly 100% due to rounding procedures.

Note that the term Local refers to your school.

ANALYSIS OF PERFORMANCE ON MATHEMATICS SKILLS

KEY	Skills	Comparative Performance					
					National average		
					Below national average	Exceeds national average	
	M1 Using basic concepts and operations in arithmetic problem solving				Xf		
	M2 Understanding geometry and coordinate geometry				Xf		
	M3 Dealing with probability, basic statistics, charts, and graphs				Xf		
	M4 Creating either figures or algebraic equations, inequalities, or expressions to help solve				Xf		
	M5 Using basic algebraic concepts and operations to solve problems				Xf		
	M6 Making connections among mathematical topics				Xf		
	M7 Organizing and managing information to solve multistep problems				Xf		
	M8 Using logical reasoning				Xf		
	M9 Recognizing patterns and equivalent forms				Xf		
	M10 Recognizing logical key words				Xf		
	M11 Using answer choices to help solve the problem				Xf		
MATH							

PSAT/NMSQT 2009 WRITING SKILLS SECTION

We recommend that you review the writing skills sections of the test prior to reviewing this report. It will familiarize you with the questions and aid in identifying specific test questions that may warrant special attention.

Pages 13 - 16 present three different perspectives on student performance on the October 2009 PSAT/NMSQT writing skills sections. These perspectives help educators look beyond student scores to identify their students' skills and areas for improvement, to ultimately support curriculum planning. Below is a description of each section and suggestions for further review.

Analysis of Correct Answers

This section contains a review of your group's answers to each writing skills question. It shows the percent of your group that responded correctly on each question, as well as the percent of students who responded correctly in your state, in the nation, and in a comparable group.

Pay particular attention to: (1) questions that appear in the darker gray area on the second graph "Difference between local and comparable groups", as this depicts where your group performed below expectation; and (2) to questions on the first graph where they performed below the state/national percentages. The left most table shows the percent correct for each group as well as the difficulty level (1-easy to 9-difficult) for each question.

Analysis of Incorrect Answers

This section provides insight into the problems students might have had with each writing skills question. In the "Percent of Answers" column, the correct answer is highlighted in a box and calls out the percent answered correctly by your group, your state, and the nation. You can also look at the incorrect answers to see the percentage of students that answered incorrectly (in your group and compared to other students in your state and the nation). The graph on the right is a visual representation and allows you to easily identify questions that your students most commonly missed and what their incorrect responses were. After you identify the commonly missed questions, go back to the test book and review the question and the incorrect answers to identify common problems with concepts, content, or basic reasoning. You may also want to reference the Test Question Detail for more insight into each question.

Note: writing skills question types; Improving sentences (1-20); Identifying sentence errors (21-34); Improving paragraphs (35-39).

Analysis of Skills

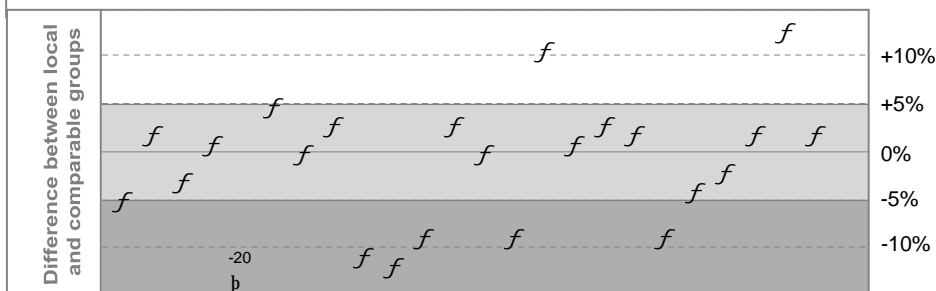
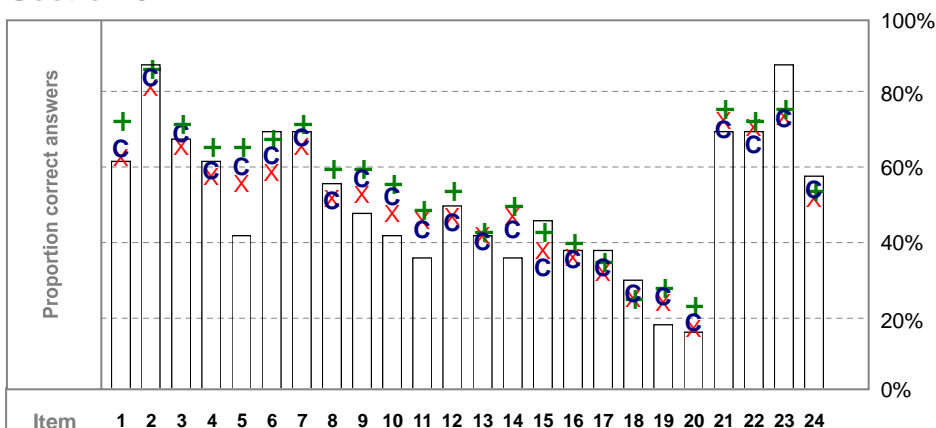
This section gives you information on the skills covered by the writing sections of the PSAT/NMSQT. The nation's performance is represented by the vertical line, and is the base, or average, performance on each skill. For each reported skill, you can see how your students performed compared to the nation and to the state. Any skills in which your students performed below (to the left of) the nation or state should probably be reviewed. Focus on those skills where your students' performance was the most noticeably below the state, and then those most noticeably below the nation. This skills report will confirm much of what you learned on the previous pages of question analyses. It may also provide additional insights into problem areas not previously addressed.

Note: The writing skills noted in this report are the skills that appear with high enough frequency for aggregate reporting

ANALYSIS OF CORRECT WRITING SKILLS ANSWERS

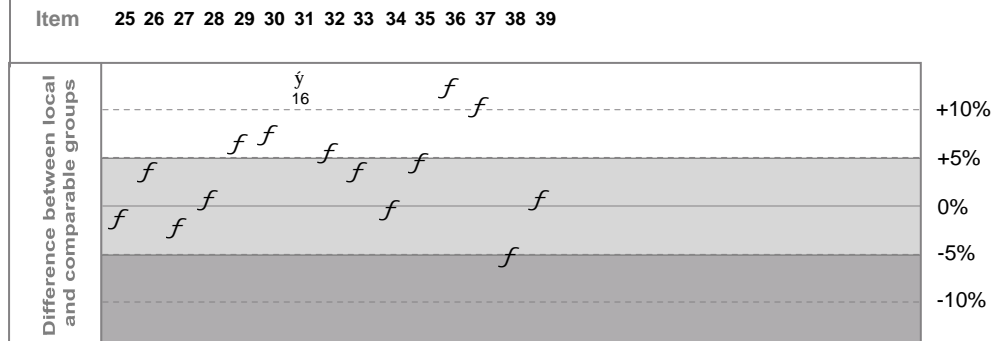
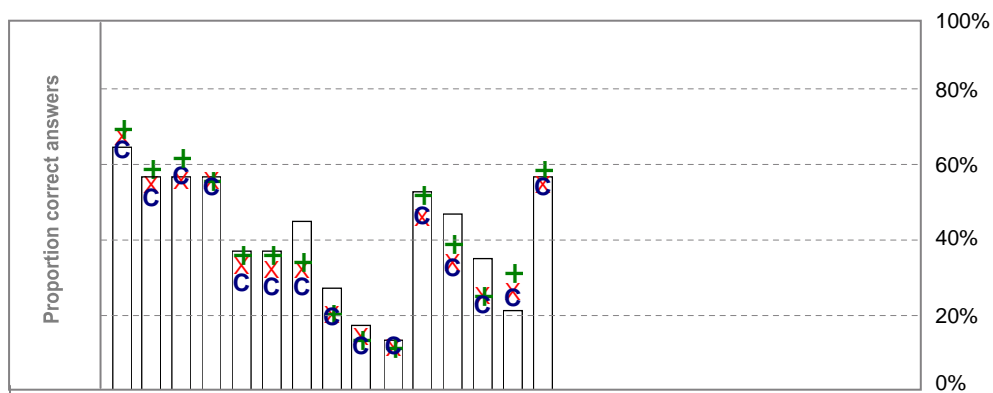
KEY	Question	Difficulty	Correct Answer	Percent Correct			
				Local	State	Nation	Comp Group
SECTION 5	1	2	D	62	65	75	67
	2	1	B	88	84	89	86
	3	2	C	68	68	74	71
	4	3	E	62	60	68	61
	5	3	D	42	58	68	62
	6	3	A	70	61	70	65
	7	2	C	70	68	74	70
	8	4	B	56	54	62	53
	9	3	D	48	55	62	59
	10	4	E	42	50	58	54
	11	4	D	36	48	51	45
	12	4	C	50	49	56	47
	13	5	C	42	44	45	42
	14	4	D	36	49	52	45
	15	5	E	46	40	45	35
	16	5	B	38	38	42	37
	17	6	C	38	34	37	35
	18	6	A	30	27	27	28
	19	6	C	18	26	30	27
	20	7	E	16	19	25	20
	21	2	A	70	75	78	72
	22	2	D	70	73	75	68
	23	1	E	88	76	78	75
	24	3	E	58	54	56	56

Section 5



SECTION 5	25	2	A	66	71	73	67
	26	3	D	58	58	62	54
	27	3	A	58	59	65	60
	28	3	E	58	59	59	57
	29	5	A	38	36	39	31
	30	6	A	38	35	39	30
	31	5	B	46	35	37	30
	32	7	B	28	23	23	22
	33	8	B	18	17	16	14
	34	8	E	14	14	14	14
	35	3	C	54	49	55	49
	36	5	D	48	37	42	35
	37	6	C	36	28	28	25
	38	5	B	22	29	34	27
	39	2	C	58	58	62	57

Section 5



Note that the term Local refers to your school.

See page 1 for a definition of comparable group.

ANALYSIS OF INCORRECT WRITING SKILLS ANSWERS

KEY	Question	Difficulty	Group	Percent of Answers						Omitted	Distribution of Answers				Correct Answer
				A	B	C	D	E							
SECTION 5	1	2	Local State Nation	6 9 5	20 14 11	2 4 3	62 65 75	10 7 6	0 1 1	<div><div>A</div><div>B</div><div>C</div><div>D</div><div>E</div></div>	<div><div>A</div><div>B</div><div>C</div><div>D</div><div>E</div></div>	<div><div>A</div><div>B</div><div>C</div><div>D</div><div>E</div></div>	<div><div>A</div><div>B</div><div>C</div><div>D</div><div>E</div></div>	<div><div>A</div><div>B</div><div>C</div><div>D</div><div>E</div></div>	
	2	1	Local State Nation	8 6 5	88 84 89	0 4 2	4 4 2	0 0 0	<div><div>A</div><div>B</div><div>C</div><div>D</div><div>E</div></div>	<div><div>A</div><div>B</div><div>C</div><div>D</div><div>E</div></div>	<div><div>A</div><div>B</div><div>C</div><div>D</div><div>E</div></div>	<div><div>A</div><div>B</div><div>C</div><div>D</div><div>E</div></div>	<div><div>A</div><div>B</div><div>C</div><div>D</div><div>E</div></div>		
	3	2	Local State Nation	2 3 2	8 68 74	68 20 18	20 20 18	2 5 3	0 1 1	<div><div>A</div><div>B</div><div>C</div><div>D</div><div>E</div></div>	<div><div>A</div><div>B</div><div>C</div><div>D</div><div>E</div></div>	<div><div>A</div><div>B</div><div>C</div><div>D</div><div>E</div></div>	<div><div>A</div><div>B</div><div>C</div><div>D</div><div>E</div></div>	<div><div>A</div><div>B</div><div>C</div><div>D</div><div>E</div></div>	
	4	3	Local State Nation	2 4 3	22 18 14	0 3 2	14 16 13	62 60 68	0 0 0	<div><div>A</div><div>B</div><div>C</div><div>D</div><div>E</div></div>	<div><div>A</div><div>B</div><div>C</div><div>D</div><div>E</div></div>	<div><div>A</div><div>B</div><div>C</div><div>D</div><div>E</div></div>	<div><div>A</div><div>B</div><div>C</div><div>D</div><div>E</div></div>	<div><div>A</div><div>B</div><div>C</div><div>D</div><div>E</div></div>	
	5	3	Local State Nation	8 6 3	12 11 8	26 14 11	42 58 68	12 11 9	0 2 1	<div><div>A</div><div>B</div><div>C</div><div>D</div><div>E</div></div>	<div><div>A</div><div>B</div><div>C</div><div>D</div><div>E</div></div>	<div><div>A</div><div>B</div><div>C</div><div>D</div><div>E</div></div>	<div><div>A</div><div>B</div><div>C</div><div>D</div><div>E</div></div>	<div><div>A</div><div>B</div><div>C</div><div>D</div><div>E</div></div>	
	6	3	Local State Nation	70 61 70	8 11 8	8 9 7	8 7 5	6 11 9	0 1 1	<div><div>A</div><div>B</div><div>C</div><div>D</div><div>E</div></div>	<div><div>A</div><div>B</div><div>C</div><div>D</div><div>E</div></div>	<div><div>A</div><div>B</div><div>C</div><div>D</div><div>E</div></div>	<div><div>A</div><div>B</div><div>C</div><div>D</div><div>E</div></div>	<div><div>A</div><div>B</div><div>C</div><div>D</div><div>E</div></div>	
	7	2	Local State Nation	2 11 11	12 9 6	70 68 74	4 8 3	12 8 5	0 1 1	<div><div>A</div><div>B</div><div>C</div><div>D</div><div>E</div></div>	<div><div>A</div><div>B</div><div>C</div><div>D</div><div>E</div></div>	<div><div>A</div><div>B</div><div>C</div><div>D</div><div>E</div></div>	<div><div>A</div><div>B</div><div>C</div><div>D</div><div>E</div></div>	<div><div>A</div><div>B</div><div>C</div><div>D</div><div>E</div></div>	
	8	4	Local State Nation	2 9 8	56 54 62	20 21 17	18 11 10	2 5 4	2 1 1	<div><div>A</div><div>B</div><div>C</div><div>D</div><div>E</div></div>	<div><div>A</div><div>B</div><div>C</div><div>D</div><div>E</div></div>	<div><div>A</div><div>B</div><div>C</div><div>D</div><div>E</div></div>	<div><div>A</div><div>B</div><div>C</div><div>D</div><div>E</div></div>	<div><div>A</div><div>B</div><div>C</div><div>D</div><div>E</div></div>	
	9	3	Local State Nation	8 6 4	18 14 12	4 8 5	48 55 62	22 17 15	0 1 1	<div><div>A</div><div>B</div><div>C</div><div>D</div><div>E</div></div>	<div><div>A</div><div>B</div><div>C</div><div>D</div><div>E</div></div>	<div><div>A</div><div>B</div><div>C</div><div>D</div><div>E</div></div>	<div><div>A</div><div>B</div><div>C</div><div>D</div><div>E</div></div>	<div><div>A</div><div>B</div><div>C</div><div>D</div><div>E</div></div>	
	10	4	Local State Nation	24 16 14	4 6 4	24 18 15	4 8 6	42 50 58	2 3 2	<div><div>A</div><div>B</div><div>C</div><div>D</div><div>E</div></div>	<div><div>A</div><div>B</div><div>C</div><div>D</div><div>E</div></div>	<div><div>A</div><div>B</div><div>C</div><div>D</div><div>E</div></div>	<div><div>A</div><div>B</div><div>C</div><div>D</div><div>E</div></div>	<div><div>A</div><div>B</div><div>C</div><div>D</div><div>E</div></div>	
	11	4	Local State Nation	16 15 15	34 20 20	12 11 9	36 48 51	2 4 3	0 2 2	<div><div>A</div><div>B</div><div>C</div><div>D</div><div>E</div></div>	<div><div>A</div><div>B</div><div>C</div><div>D</div><div>E</div></div>	<div><div>A</div><div>B</div><div>C</div><div>D</div><div>E</div></div>	<div><div>A</div><div>B</div><div>C</div><div>D</div><div>E</div></div>	<div><div>A</div><div>B</div><div>C</div><div>D</div><div>E</div></div>	
	12	4	Local State Nation	10 10 8	20 23 22	50 49 56	12 6 4	8 11 9	0 2 2	<div><div>A</div><div>B</div><div>C</div><div>D</div><div>E</div></div>	<div><div>A</div><div>B</div><div>C</div><div>D</div><div>E</div></div>	<div><div>A</div><div>B</div><div>C</div><div>D</div><div>E</div></div>	<div><div>A</div><div>B</div><div>C</div><div>D</div><div>E</div></div>	<div><div>A</div><div>B</div><div>C</div><div>D</div><div>E</div></div>	
	13	5	Local State Nation	22 18 18	8 9 9	42 44 45	2 5 4	22 21 21	4 3 3	<div><div>A</div><div>B</div><div>C</div><div>D</div><div>E</div></div>	<div><div>A</div><div>B</div><div>C</div><div>D</div><div>E</div></div>	<div><div>A</div><div>B</div><div>C</div><div>D</div><div>E</div></div>	<div><div>A</div><div>B</div><div>C</div><div>D</div><div>E</div></div>	<div><div>A</div><div>B</div><div>C</div><div>D</div><div>E</div></div>	
	14	4	Local State Nation	26 23 25	10 10 9	8 6 4	36 49 52	20 11 9	0 1 2	<div><div>A</div><div>B</div><div>C</div><div>D</div><div>E</div></div>	<div><div>A</div><div>B</div><div>C</div><div>D</div><div>E</div></div>	<div><div>A</div><div>B</div><div>C</div><div>D</div><div>E</div></div>	<div><div>A</div><div>B</div><div>C</div><div>D</div><div>E</div></div>	<div><div>A</div><div>B</div><div>C</div><div>D</div><div>E</div></div>	
	15	5	Local State Nation	4 8 8	22 20 18	16 18 16	12 12 11	46 40 45	0 3 3	<div><div>A</div><div>B</div><div>C</div><div>D</div><div>E</div></div>	<div><div>A</div><div>B</div><div>C</div><div>D</div><div>E</div></div>	<div><div>A</div><div>B</div><div>C</div><div>D</div><div>E</div></div>	<div><div>A</div><div>B</div><div>C</div><div>D</div><div>E</div></div>	<div><div>A</div><div>B</div><div>C</div><div>D</div><div>E</div></div>	
	16	5	Local State Nation	24 27 31	38 38 42	18 18 14	18 13 10	2 2 1	0 2 2	<div><div>A</div><div>B</div><div>C</div><div>D</div><div>E</div></div>	<div><div>A</div><div>B</div><div>C</div><div>D</div><div>E</div></div>	<div><div>A</div><div>B</div><div>C</div><div>D</div><div>E</div></div>	<div><div>A</div><div>B</div><div>C</div><div>D</div><div>E</div></div>	<div><div>A</div><div>B</div><div>C</div><div>D</div><div>E</div></div>	
	17	6	Local State Nation	20 22 19	24 28 30	38 34 37	6 8 5	12 6 5	0 2 3	<div><div>A</div><div>B</div><div>C</div><div>D</div><div>E</div></div>	<div><div>A</div><div>B</div><div>C</div><div>D</div><div>E</div></div>	<div><div>A</div><div>B</div><div>C</div><div>D</div><div>E</div></div>	<div><div>A</div><div>B</div><div>C</div><div>D</div><div>E</div></div>	<div><div>A</div><div>B</div><div>C</div><div>D</div><div>E</div></div>	
	18	6	Local State Nation	30 27 27	4 7 5	38 36 39	20 16 15	6 9 8	2 5 5	<div><div>A</div><div>B</div><div>C</div><div>D</div><div>E</div></div>	<div><div>A</div><div>B</div><div>C</div><div>D</div><div>E</div></div>	<div><div>A</div><div>B</div><div>C</div><div>D</div><div>E</div></div>	<div><div>A</div><div>B</div><div>C</div><div>D</div><div>E</div></div>	<div><div>A</div><div>B</div><div>C</div><div>D</div><div>E</div></div>	
	19	6	Local State Nation	14 15 16	24 21 19	18 26 30	26 23 24	10 10 6	8 5 5	<div><div>A</div><div>B</div><div>C</div><div>D</div><div>E</div></div>	<div><div>A</div><div>B</div><div>C</div><div>D</div><div>E</div></div>	<div><div>A</div><div>B</div><div>C</div><div>D</div><div>E</div></div>	<div><div>A</div><div>B</div><div>C</div><div>D</div><div>E</div></div>	<div><div>A</div><div>B</div><div>C</div><div>D</div><div>E</div></div>	
	20	7	Local State Nation	14 11 10	22 18 13	40 33 32	6 16 16	16 19 25	2 4 4	<div><div>A</div><div>B</div><div>C</div><div>D</div><div>E</div></div>	<div><div>A</div><div>B</div><div>C</div><div>D</div><div>E</div></div>	<div><div>A</div><div>B</div><div>C</div><div>D</div><div>E</div></div>	<div><div>A</div><div>B</div><div>C</div><div>D</div><div>E</div></div>	<div><div>A</div><div>B</div><div>C</div><div>D</div><div>E</div></div>	
	21	2	Local State Nation	70 75 78	4 4 3	6 6 5	8 3 3	12 11 9	0 1 2	<div><div>A</div><div>B</div><div>C</div><div>D</div><div>E</div></div>	<div><div>A</div><div>B</div><div>C</div><div>D</div><div>E</div></div>	<div><div>A</div><div>B</div><div>C</div><div>D</div><div>E</div></div>	<div><div>A</div><div>B</div><div>C</div><div>D</div><div>E</div></div>	<div><div>A</div><div>B</div><div>C</div><div>D</div><div>E</div></div>	
	22	2	Local State Nation	2 2 1	6 3 2	4 5 4	70 73 75	18 16 15	0 2 3	<div><div>A</div><div>B</div><div>C</div><div>D</div><div>E</div></div>	<div><div>A</div><div>B</div><div>C</div><div>D</div><div>E</div></div>	<div><div>A</div><div>B</div><div>C</div><div>D</div><div>E</div></div>	<div><div>A</div><div>B</div><div>C</div><div>D</div><div>E</div></div>	<div><div>A</div><div>B</div><div>C</div><div>D</div><div>E</div></div>	
	23	1	Local State Nation	4 4 3	2 6 5	4 5 4	2 7 6	88 76 78	0 3 4	<div><div>A</div><div>B</div><div>C</div><div>D</div><div>E</div></div>	<div><div>A</div><div>B</div><div>C</div><div>D</div><div>E</div></div>	<div><div>A</div><div>B</div><div>C</div><div>D</div><div>E</div></div>	<div><div>A</div><div>B</div><div>C</div><div>D</div><div>E</div></div>	<div><div>A</div><div>B</div><div>C</div><div>D</div><div>E</div></div>	
	24	3	Local State Nation	0 7 6	20 12 12	10 8 6	58 54 56	2 15 14	5 5 6	<div><div>A</div><div>B</div><div>C</div><div>D</div><div>E</div></div>	<div><div>A</div><div>B</div><div>C</div><div>D</div><div>E</div></div>	<div><div>A</div><div>B</div><div>C</div><div>D</div><div>E</div></div>	<div><div>A</div><div>B</div><div>C</div><div>D</div><div>E</div></div>	<div><div>A</div><div>B</div><div>C</div><div>D</div><div>E</div></div>	

Note that the total percentage of all answer choices may not always add up to exactly 100% due to rounding procedures.

Note that the term Local refers to your school.

ANALYSIS OF INCORRECT WRITING SKILLS ANSWERS

KEY	Question	Difficulty	Group	Percent of Answers						Omitted	Distribution of Answers				Correct Answer				
				A	B	C	D	E											
											20%	40%	60%	80%					
SECTION 5	25	2	Local	66	12	0	6	12	4		B	D	E			A			
			State	71	7	4	7	8	4		B	C	D	E		A			
			Nation	73	5	2	6	9	5		B	C	D	E		A			
	26	3	Local	26	6	2	58	8	0		A		B	C	E		D		
			State	12	8	4	58	15	3		A		B	C	E		D		
			Nation	12	5	3	62	14	4		A		B	C	E		D		
	27	3	Local	58	14	6	0	18	4		B		C	D	E		A		
			State	59	9	8	2	17	4		B		C	D	E		A		
			Nation	65	7	7	1	14	6		B		C	D	E		A		
	28	3	Local	10	8	14	8	58	2		A		B		C	D	E		
			State	12	11	8	6	59	5		A		B		C	D	E		
			Nation	13	11	7	4	59	7		A		B		C	D	E		
	29	5	Local	38	6	14	8	32	2		B		C	D	E		A		
			State	36	6	15	9	30	5		B		C	D	E		A		
			Nation	39	4	12	6	32	7		B		C	D	E		A		
	30	6	Local	38	10	22	0	26	4		B		C	D	E		A		
			State	35	8	15	3	33	5		B		C	D	E		A		
			Nation	39	7	13	2	32	8		B		C	D	E		A		
	31	5	Local	4	46	6	14	24	6		A	C	D	E			B		
			State	3	35	12	15	25	8		A	C	D	E			B		
			Nation	4	37	12	12	26	10		A	C	D	E			B		
	32	7	Local	6	28	12	6	48	0		A	C	D	E			B		
			State	5	23	12	6	47	7		A	C	D	E			B		
			Nation	5	23	12	5	45	10		A	C	D	E			B		
	33	8	Local	4	18	26	4	44	4		A		C	D	E		B		
			State	6	17	25	6	40	7		A		C	D	E		B		
			Nation	4	16	22	4	44	10		A		C	D	E		B		
	34	8	Local	70	8	2	4	14	2					A		B	C	D	E
			State	61	7	9	3	14	7					A		B	C	D	E
			Nation	61	6	7	2	14	10					A		B	C	D	E
	35	3	Local	8	12	54	14	8	4		A		B		D	E			C
			State	16	10	49	9	6	9		A		B		D	E			C
			Nation	15	7	55	7	4	13		A		B		D	E			C
	36	5	Local	14	6	24	48	4	4		A		B		C	E			D
			State	12	12	20	37	9	10		A		B		C	E			D
			Nation	12	10	17	42	6	14		A		B		C	E			D
	37	6	Local	30	8	36	14	2	10				A		B	D	E		C
			State	32	13	28	10	4	13				A		B	D	E		C
			Nation	35	10	28	8	3	16				A		B	D	E		C
	38	5	Local	34	22	6	8	20	10				A		C	D	E		B
			State	27	29	8	8	11	16				A		C	D	E		B
			Nation	24	34	7	7	10	19				A		C	D	E		B
	39	2	Local	4	6	58	4	12	16		A	B	D	E					C
			State	6	5	58	7	10	14		A	B	D	E					C
			Nation	4	4	62	5	7	19		A	B	D	E					C

Note that the total percentage of all answer choices may not always add up to exactly 100% due to rounding procedures.

Note that the term Local refers to your school.

KEY

KEY	Skills	Comparative Performance					
					National average		
					Below national average	Exceeds national average	
		X State	f Local				
	W1 Being precise and clear				f		
	W2 Following conventions in writing				fX		
	W3 Recognizing logical connections within sentences and passages				fX		
	W4 Using verbs correctly				x f		
	W5 Recognizing improper pronoun use				x f		
	W7 Understanding complicated sentence structures				fX		
	W9 Understanding the structure of sentences with abstract ideas				Xf		
	W10 Understanding the structure of sentences that relate to science or math				Xf		
	W11 Understanding the structure of sentences that relate to the arts				f X		
WRITING							

WRITING

Generated 12/13/2009 © Copyright The College Board 2009